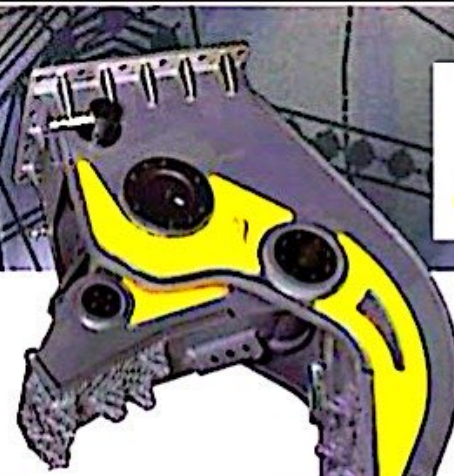


# Pulverizer (Fixed)

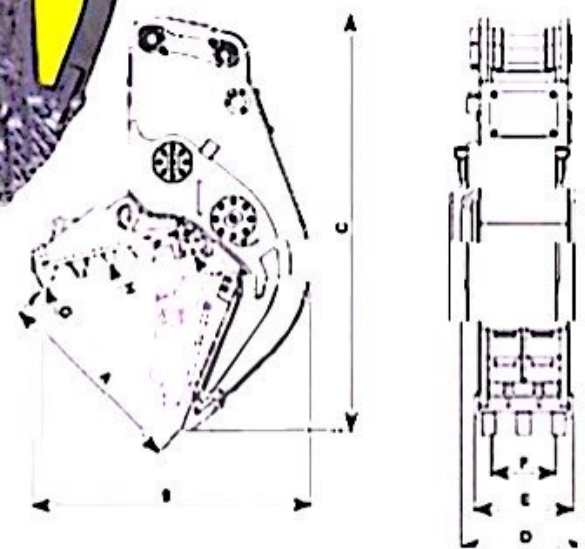


- Wide jaw opening for work efficient
- Trunnion mounting cylinder for compact design
- High strength and wear resistance materials (Hardox) for reliability
- Speed-up valve for fast work

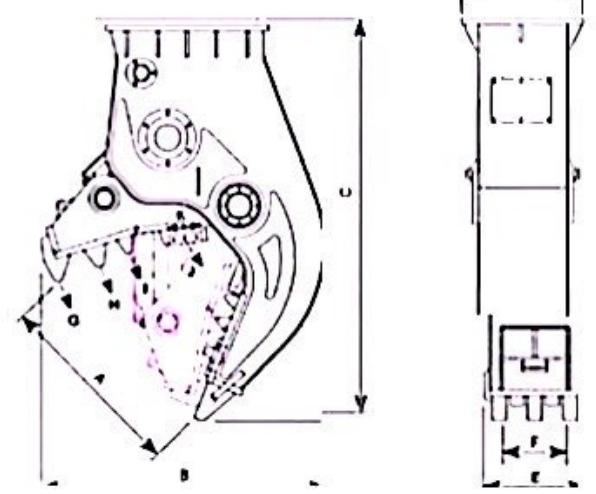


Description		units	PR050F	PR080F	PR150F	PR200F	PR300F
Weight		lb	1,280	1,430	3,020	3,880	5,560
Max Opening Width	A	in	29.3	28.5	33.1	38.6	43.7
Overall Width	B	in	41.3	41.7	47.8	56.9	62.6
Overall Length	C	in	60.8	63.2	65.6	77.0	87.8
Overall Height	D	in	18.5	18.7	22.8	25.8	26.8
Body Width	E	in	14.6	14.6	17.7	19.9	23.8
Jaw Width	F	in	10.0	12.2	12.2	12.6	15.0
Crushing Force	G	US ton	24 (@3,500psi)	28 (@4,100psi)	42 (@4,800psi)	53 (@4,800psi)	72 (@4,800psi)
	H	US ton	37 (@3,500psi)	43 (@4,100psi)	55 (@4,800psi)	68 (@4,800psi)	96 (@4,800psi)
	I	US ton	-	-	69 (@4,800psi)	86 (@4,800psi)	125 (@4,800psi)
Cutting Force	J	US ton	80 (@3,500psi)	107 (@4,100psi)	157 (@4,800psi)	204 (@4,800psi)	222 (@4,800psi)
Cutter Length	K	In	3.9	3.9	6.7	6.7	7.9
Allowable Max. System Pressure		psi	3,900	4,400	5,500	5,500	5,500
Recommended Oil Flow		gpm	13.2 ~ 23.8	15.9 ~ 34.3	29.1 ~ 52.8	39.6 ~ 66.0	66.0 ~ 79.3
Speed-up Valve		-	No	No	Option	Option	Option
Recommended Carrier Weight		Ton	4 ~ 10	6 ~ 12	13 ~ 20	22 ~ 30	32 ~ 55
Mounting type		-	P	P	B	P,B	P,B

Pin on Type Mounting (P)



Bolt on type Mounting (B)



\* Above specifications are subject to change without prior notice.