

# Pile Breaker

EXCAVATOR ATTACHMENTS



MAKE YOUR JOB EASIER AND FASTER

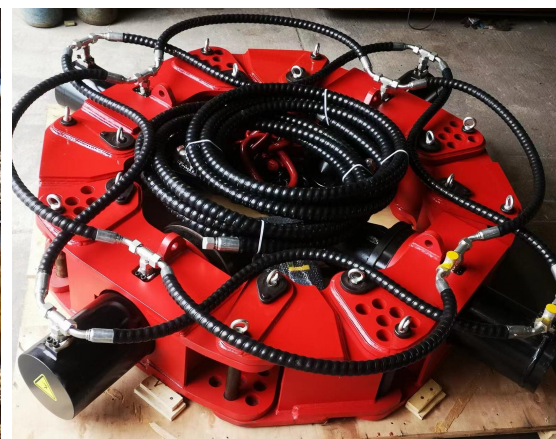
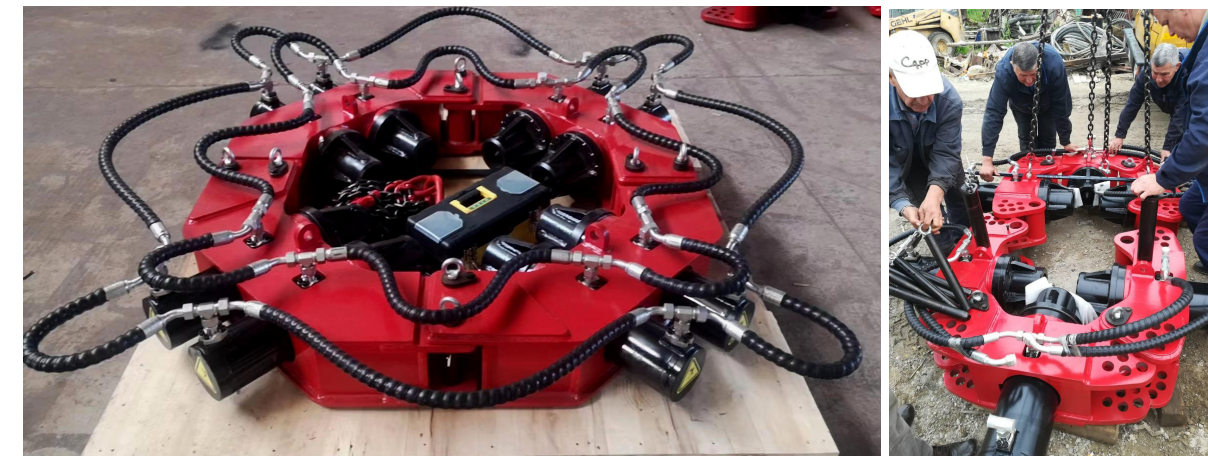


# ◀ Pile Breaker Specification



**IAI- Hydraulic Pile Breaker** applicable a variety of broken piles such as beam piles, foundation piles, roads and bridges, and high-speed rail piles. Provide pressure on multiple oil cylinders by power source, and the oil cylinder directly drives the rod, while squeezing the pile body to cut the pile head cut off.

Model	Unit	SP400 (Light)	SP500 (Light)	SP600 (Heavy)	SP380 (Light)	SP800 (Heavy)
Range of pile breaker	inch	12-15□	15-19□	12-21	◎12-41	◎19-78
Max force for single rod	KN	320	320	790	320	790
Max stroke of hydraulic cylinder	mm	150	150	205	150	205
Pressure of hydraulic cylinder	Mpa	34.3	34.3	34.3	34.3	34.3
Max flow for single cylinder	L/min	25	25	25	25	25
Max height for each crush	mm	≤300	≤300	≤300	≤300	≤300
Suitable carrier	T	≥8	≥15	≥20	12-26	20-36
Single mould weight	kg	110	220	400	110	385
Single module size	mm	604*594*286	595*980*275	910*780*400	604*594*286	908*680*380
Dimensions at working	mm	1600*1600*2000	1710*1710*2500	2050*2050*2000	2268*2500	3200*3000
Total pile breaker weight	kg	650	950	2000	1500	4620





◀ **Pile Breaker Spare Parts**



*Modules*



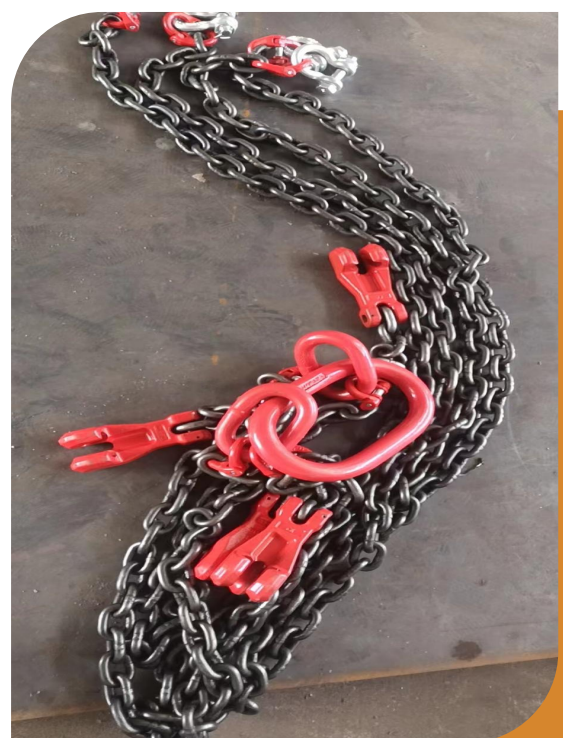
*Tool box*



*Chisel*



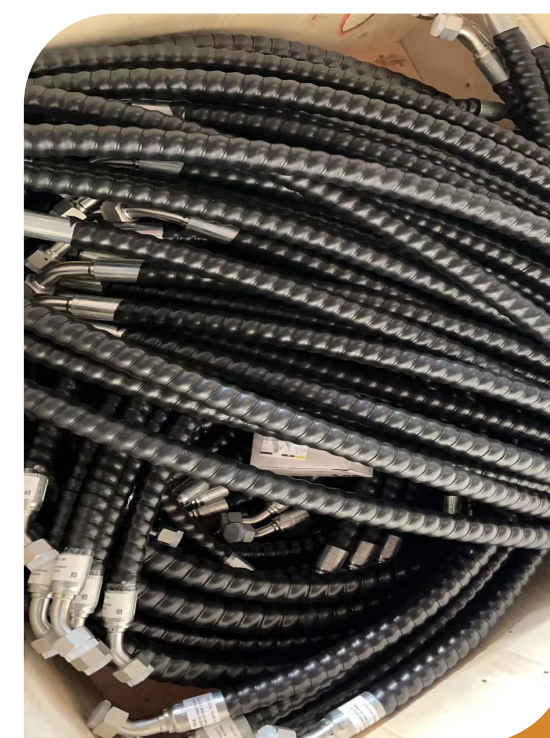
*Seal Kits*



*Chain*



*Flang*



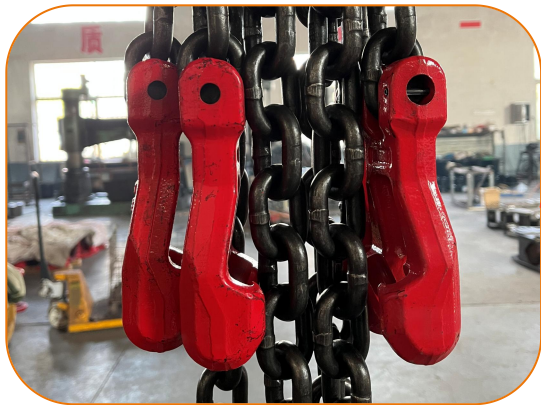
*Oil hose*



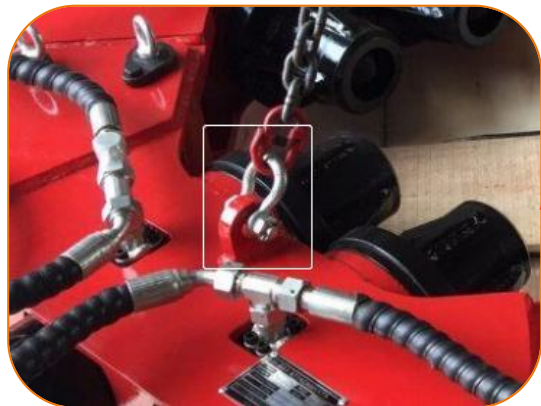
*Cylinder*



## ◀ Structure of Pile Breaker



The chain hoist is adjustable and the loading weight is 4 tons.



The shackle loading weight is 3 tons. Meet the national standards.



The position of the cylinder is in the middle, and its service life is longer than the cylinder. And reduce damage in other parts.



There are 7 kinds of pin axle holes to match different shaft. To prevent the form of pile breaker changed when it worked.



The mechanical stress is put pressure on the structural parts not on the connection when it worked and the oil cylinder which is specially-made by Sunny used the double oil seal.



The special shape of the pipeline also aims to ensure the protection of the hydraulic system under each working conditions.





## ◀ Performance Characteristics

### ***Environment-friendly***

Its full hydraulic drive causes little noises during operation and no influence on the surrounding environments.

### ***Low-cost***

The operating system is easy and convenient. Fewer operating workers are required to save cost for labor and machines maintenance during construction.

### ***Multi-function***

Module generalization is realized with our SP400 square pile machine. It can be used for both circular piles and square piles by changing the module combination.

### ***Small volume***

It's light for convenient transportation.

### ***Safety***

Contact-free operation is enabled and it can be applied for construction on complex landform.

### ***Universal property***

It can be driven by diverse power sources and is compatible with excavators or hydraulic system according to the construction sites conditions. It is flexible to connect multiple construction machines with universal and economical performance.

The telescopic sling lifting chains meet the requirements of various landforms.

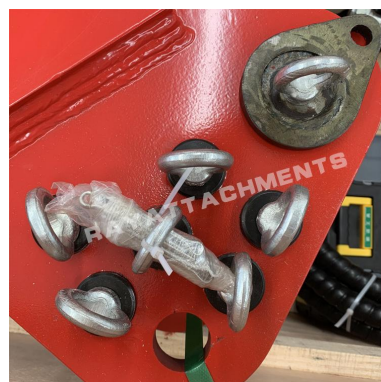
### ***Long service life***

It is made of military material by first-class suppliers with reliable quality, extending its service life.

### ***Convenience***

It's small for convenient transportation.

Replaceable and changeable module combination makes its applicable for piles with various diameters. The modules can be assembled and disassembled easily and conveniently.





# Project Cases

