

B Type

Excavator Mounted Hydraulic Vibratory Hammers



“The values of our models are demonstrated by our first class quality and innovative designing process. We always anticipate market demands and change our strategies by innovative designs and actions to adapt current conditions accordingly. “

Our excavator mounted vibratory hammers are attached easily to excavator pump system and can be operated in a very short time. A line is a feeding line for hydromotor and B line is for clamp open action. Drain line is a connection from hydromotor oil leak- age to excavator tank.

OPTION : A line + Electric Line to open clamp
The clamp can be opened by remote control in excavator cabin.

Also we offer our customers small power packs to operate without excavator oil supply displacement. All of the power packs have wireless or wire type remote control utility.

Operator Friendly

We manufacture connection hitches as per the excavator boom dimensions to help operator to connect the unit easily.

If needed to extend the boom height of your excavator, we also manufacture extension booms from 2 mt up to 4 mt. Our extension booms are ready with hydraulic lines.



B Type - Excavator Mounted Hydraulic Vibratory Hammers

- | | |
|-----------|-----------|
| ▲ ESF 03B | ▲ ESF 4B |
| ▲ ESF 1B | ▲ ESF 6B |
| ▲ ESF 2B | ▲ ESF 8B |
| ▲ ESF 3B | ▲ ESF 12B |

International attachments Inc.

www.iai-usa.com | 1-877-219-1962 | Email: info@iai-usa.com
Worldwide sales and service, On site Training and maintenance.

ESF 03B

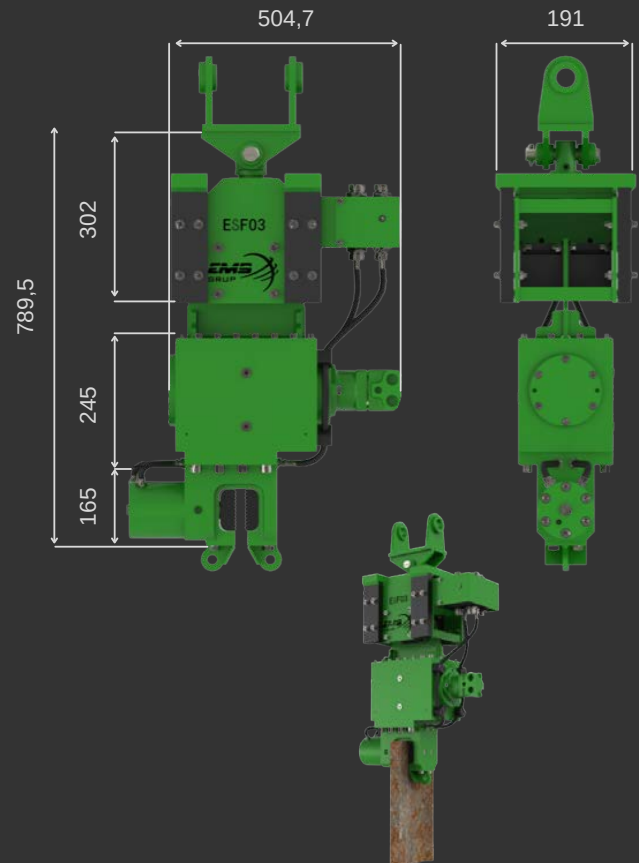
B TYPE - EXCAVATOR MOUNTED HYDRAULIC VIBRATORY HAMMER

ESF03 is the smallest vibratory hammer in the world. Available as excavator mounted or suspended working of a small 30 lt/min. power pack. The unit weight is 160 kgs in mount- ed mode and 190 kgs in suspended due to the addition of reaction weights on unit.

**All rights reserved. Subject to change without notice.*



Excavator Class	tons	5
Centrifugal Force	kN	33
Eccentric Moment	kgm	0,33
Speed	rpm	3000
Pulling Force	kN	15
Push Down	kN	15
Total Weight (Incl. Clamp)	kg	160
Dynamic Weight (Incl. Clamp)	kg	120
Amplitude	mm	5.5
Power	kW	8.8
Displacement	liter/min	30
Working Pressure	bar	150
Height	mm	790
Width	mm	191
Length	mm	505



International attachments Inc.

www.iai-usa.com | 1-877-219-1962 | Email: info@iai-usa.com
Worldwide sales and service, On site Training and maintenance.

ESF 1B

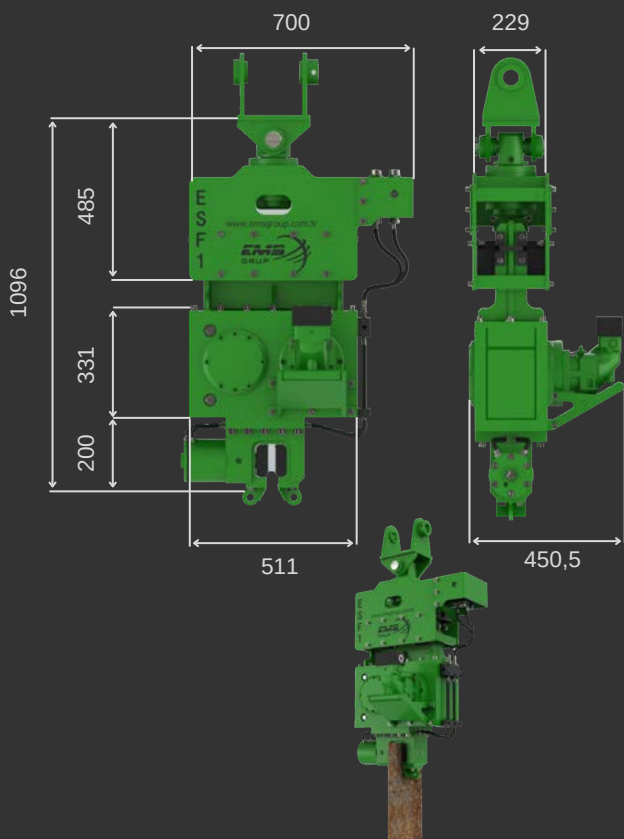
B TYPE - EXCAVATOR MOUNTED HYDRAULIC VIBRATORY HAMMER

ESF1 model micro vibro hammer is a very unique and special for small size pile driving applications. This model is attached to Back Hoe loaders and mini loaders.

**All rights reserved. Subject to change without notice.*



Excavator Class	tons	8-10
Centrifugal Force	kN	81
Eccentric Moment	kgm	1
Speed	rpm	3200
Pulling Force	kN	30
Push Down	kN	20
Total Weight (Incl. Clamp)	kg	375
Dynamic Weight (Incl. Clamp)	kg	290
Amplitude	mm	6
Power	kW	60
Displacement	liter/min	100
Working Pressure	bar	320
Height	mm	1096
Width	mm	451
Length	mm	700



International attachments Inc.

www.iai-usa.com | 1-877-219-1962 | Email: info@iai-usa.com
Worldwide sales and service, On site Training and maintenance.

ESF 2B

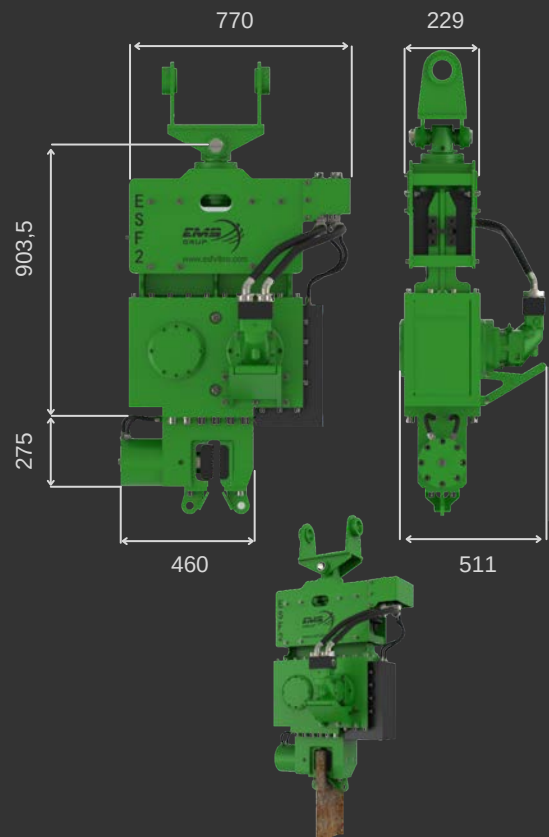
B TYPE - EXCAVATOR MOUNTED HYDRAULIC VIBRATORY HAMMER

ESF2 model vibro hammer is a very unique and special for small size pile driving applications. This model is attached to 14 tons class excavators.

**All rights reserved. Subject to change without notice.*



Excavator Class	tons	10-12
Centrifugal Force	kN	258
Eccentric Moment	kgm	2
Speed	rpm	3200
Pulling Force	kN	60
Push Down	kN	40
Total Weight (Incl. Clamp)	kg	610
Dynamic Weight (Incl. Clamp)	kg	495
Amplitude	mm	9
Power	kW	60
Displacement	liter/min	110
Working Pressure	bar	320
Height	mm	1215
Width	mm	511
Length	mm	770



International attachments Inc.

www.iai-usa.com | 1-877-219-1962 | Email: info@iai-usa.com
Worldwide sales and service, On site Training and maintenance.

ESF 3B

B TYPE - EXCAVATOR MOUNTED HYDRAULIC VIBRATORY HAMMER

ESF3 model vibro hammer is a very unique and special for small size pile driving applications. This model is attached to 16 tons class excavators. This size is optimum for PVC sheet piles driving.

**All rights reserved. Subject to change without notice.*



Excavator Class	tons	12-15
Centrifugal Force	kN	297
Eccentric Moment	kgm	3
Speed	rpm	3000
Pulling Force	kN	60
Push Down	kN	40
Total Weight (Incl. Clamp)	kg	635
Dynamic Weight (Incl. Clamp)	kg	515
Amplitude	mm	12
Power	kW	60
Displacement	liter/min	110
Working Pressure	bar	320
Height	mm	1215
Width	mm	511
Length	mm	770



International attachments Inc.

www.iai-usa.com | 1-877-219-1962 | Email: info@iai-usa.com
Worldwide sales and service, On site Training and maintenance.

ESF 4B

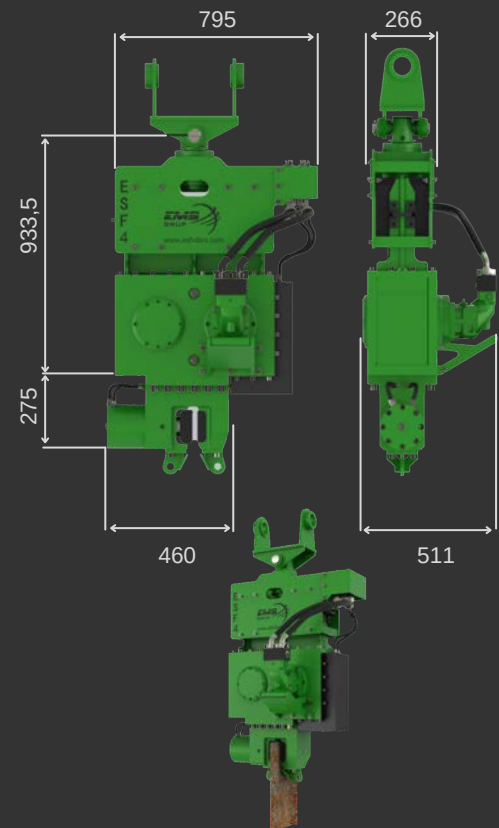
B TYPE - EXCAVATOR MOUNTED HYDRAULIC VIBRATORY HAMMER

ESF4 model vibro hammer is attached to 18/20 tons class excavators. In normal soil conditions and low weight materials enough to drive posts and sheet piles up to 6 mt.

**All rights reserved. Subject to change without notice.*



Excavator Class	tons	15-20
Centrifugal Force	kN	322
Eccentric Moment	kgm	4
Speed	rpm	3750
Pulling Force	kN	60
Push Down	kN	40
Total Weight (Incl. Clamp)	kg	650
Dynamic Weight (Incl. Clamp)	kg	530
Amplitude	mm	15
Power	kW	60
Displacement	liter/min	110
Working Pressure	bar	320
Height	mm	1215
Width	mm	511
Length	mm	770



International attachments Inc.

www.iai-usa.com | 1-877-219-1962 | Email: info@iai-usa.com
Worldwide sales and service, On site Training and maintenance.

ESF 6B

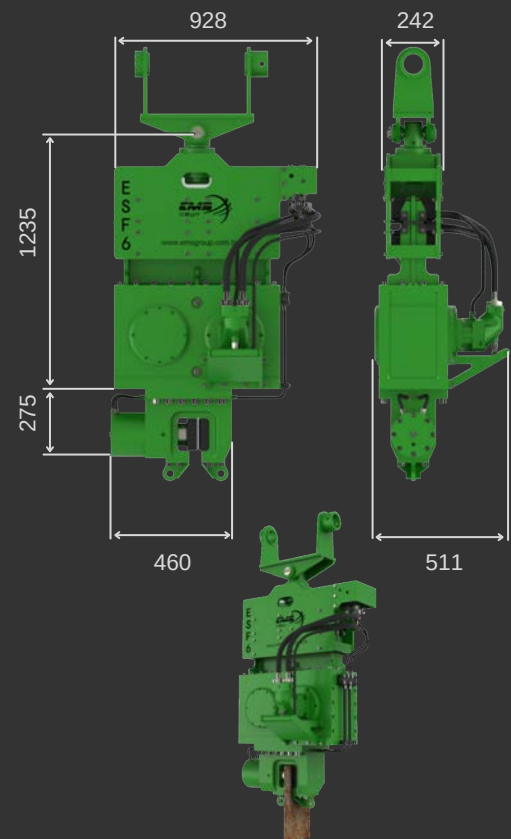
B TYPE - EXCAVATOR MOUNTED HYDRAULIC VIBRATORY HAMMER

ESF 6 size vibratory hammer is attached to 30 tons class excavators. This size vibratory hammers is efficient to drive sheet piles or steel tubes up to 10 meters in normal soil conditions.

**All rights reserved. Subject to change without notice.*



Excavator Class	tons	25-30
Centrifugal Force	kN	349
Eccentric Moment	kgm	6
Speed	rpm	2300
Pulling Force	kN	120
Push Down	kN	80
Total Weight (Incl. Clamp)	kg	1210
Dynamic Weight (Incl. Clamp)	kg	1000
Amplitude	mm	12
Power	kW	123
Displacement	liter/min	210
Working Pressure	bar	300
Height	mm	1631
Width	mm	621
Length	mm	928



International attachments Inc.

www.iai-usa.com | 1-877-219-1962 | Email: info@iai-usa.com
Worldwide sales and service, On site Training and maintenance.

ESF 8B

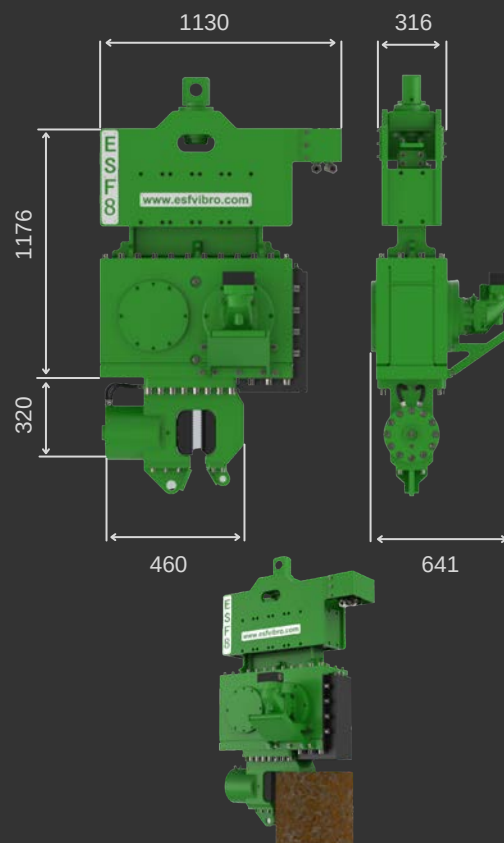
B TYPE - EXCAVATOR MOUNTED HYDRAULIC VIBRATORY HAMMER

ESF 8 size vibratory hammer is attached to 38-40 tons class excavators. Capable to drive steel sheet piles, steel tubes up to 12 meters in normal soft ground formations.

**All rights reserved. Subject to change without notice.*



Excavator Class	tons	38-40
Centrifugal Force	kN	464
Eccentric Moment	kgm	8
Speed	rpm	2300
Pulling Force	kN	150
Push Down	kN	90
Total Weight (Incl. Clamp)	kg	1610
Dynamic Weight (Incl. Clamp)	kg	1290
Amplitude	mm	13
Power	kW	148
Displacement	liter/min	253
Working Pressure	bar	350
Height	mm	1750
Width	mm	641
Length	mm	1130



International attachments Inc.

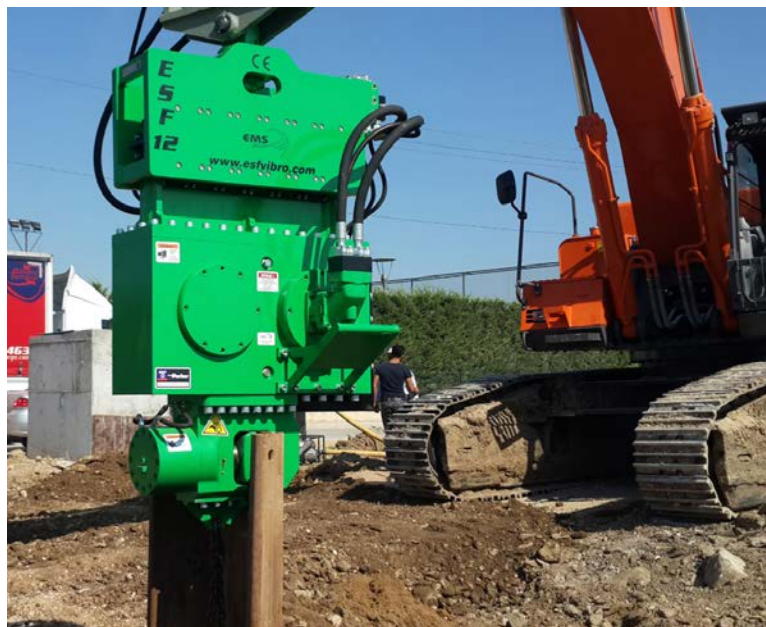
www.iai-usa.com | 1-877-219-1962 | Email: info@iai-usa.com
Worldwide sales and service, On site Training and maintenance.

ESF 12B

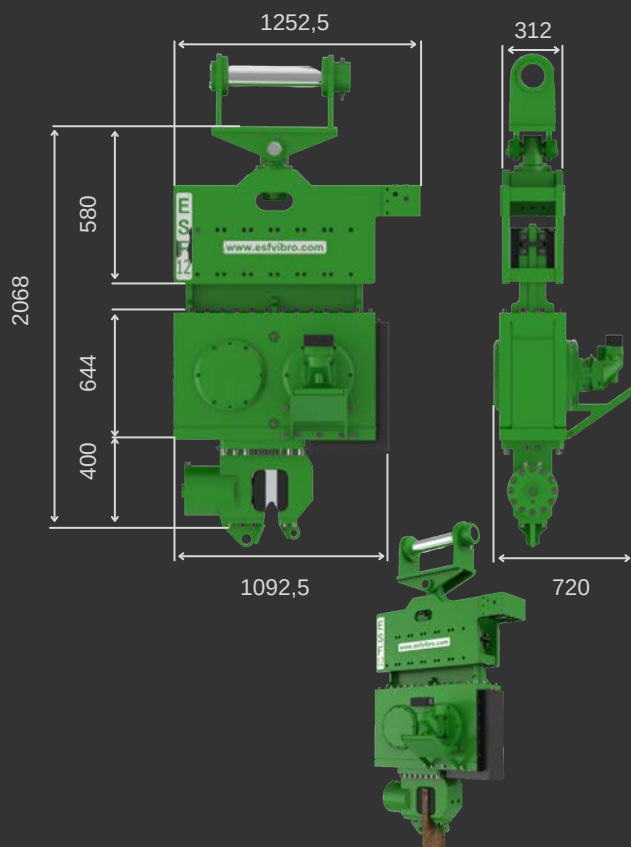
B TYPE - EXCAVATOR MOUNTED HYDRAULIC VIBRATORY HAMMER

ESF12 size vibratory hammer is attached to 47-50 tons class excavators or can be operated by power pack unit like PS 300. ESF 12 Vibratory Hammer is the biggest excavator size vibratory hammer and can drive sheet piles or steel tubes up to 15 meters in hard ground formations.

**All rights reserved. Subject to change without notice.*



Excavator Class	tons	45-50
Centrifugal Force	kN	934
Eccentric Moment	kgm	12.6
Speed	rpm	2600
Pulling Force	kN	200
Push Down	kN	200
Total Weight (Incl. Clamp)	kg	2350
Dynamic Weight (Incl. Clamp)	kg	1700
Amplitude	mm	14.8
Power	kW	185
Displacement	liter/min	315
Working Pressure	bar	300
Height	mm	2100
Width	mm	720
Length	mm	1093



International attachments Inc.

www.iai-usa.com | 1-877-219-1962 | Email: info@iai-usa.com
Worldwide sales and service, On site Training and maintenance.