

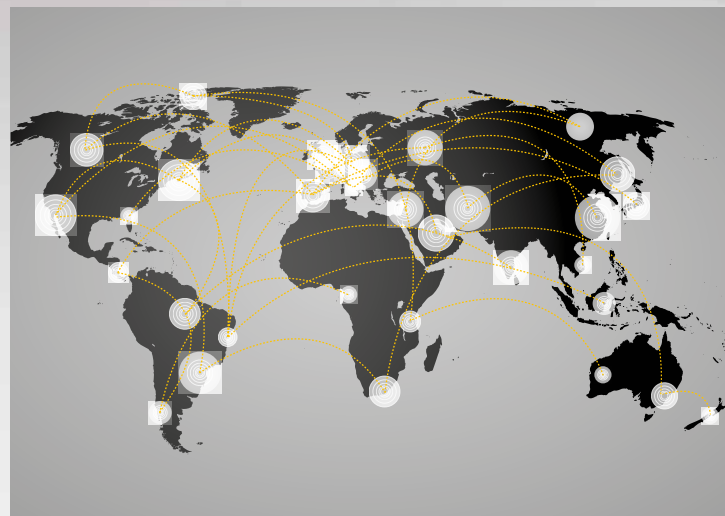
International Attachments Inc.



**WE KNOW WORK TOOLS**  
**DISCOVER THE REASONS WHY OSA IS**  
**THE RIGHT SOLUTION**







A work of love spanning four generations of our family, the pursuit of designing and delivering technically-advanced, high quality controlled demolition equipment has been our driving force since the early nineties. Our approach has led to safer job sites, facilitated recycling efforts with up to 90% of our demolitions recyclable, drastically cut fuel and labor costs, shortened job times and contributed to waste reduction.

From our inception, we set the highest standards possible for each line we developed, and as a result, we have grown to be a well-respected market leader on a global scale. To this end, we have built a state-of-the-art manufacturing facility specifically to continue to build and improve upon our advanced demolition equipment and technologies. From the systems we build to the world's finest raw materials we use, such as HARDOX and STRENX, everything we do is done to allow our clientele to do their jobs better.

Our global reach has been facilitated by our professional and highly competent dealer network.

Our network is comprised of specially trained technicians who are able to provide detailed support services for all your equipment needs worldwide. As our lines expand and evolve, we continually supply training to our dealers so that they may pass on their complete knowledge of all our products to you.

We, and all our partners, strictly adhere to our core values of Integrity, Professionalism, Credibility and Quality. We are passionate about all phases of our company, from the quality of our advanced designs to the quality of our customer service.

Our pride comes from your complete satisfaction.

## OUR PHILOSOPHY

We work harder, to give you the best.

Our customers are our partners and our desire is to work towards everyone's benefit.

**Successful business growth for our partners as a result of our products motivates and inspires our values:**

### • Production is Priority

Our products will increase your efficiency and production, resulting in greater profits for you. Your success challenges us to be better every day and in every way; we do not settle for yesterday's accomplishments. We desire to continue working for your success long into the future.

### • Personalization

We give our clients particular attention, regardless of the volume of purchases. Our team will gladly attend to your personal requests, giving you individualized guidance based on your needs, and quality after-sales service. Our team is highly trained in both sales and service, so your experience will be seamless.

### • Professional Service

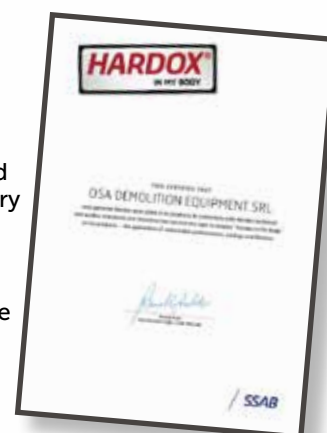
Our core value is to provide customer service with excellence, diligence and confidentiality. We provide the leading service in the market. Our goal is to meet your needs from the outset; your time is valuable.

### • Pursuit of Progress

We invest in research and development to maintain our position at the forefront of technology. Our team listens attentively to our clients to implement their needs, constantly looking to improve product standards. Our partnership with you means that our companies progress together.

### Our services include:

- Guidance on how to optimize your project productivity
- Connections, adapters and bolts to suit your machinery
- Professional tool calibration
- The best after-sales service with a real guarantee



All this at no additional cost.

We work harder, to give you the best.



**We manufacture a full line to fit everything from a skid steer or mini excavator, all the way up to the largest/heaviest equipment.**

## HYDRAULIC HAMMERS

# HAMMERING OUT ADVANCED DETAILS

# HB SERIES



The HB Series of hydraulic hammers embodies our commitment to not only building great relationships with customers, but listening to them as well. Their input has exponentially grown our expertise, allowing us to continually evolve our hydraulic hammers in ways that fulfill their needs at the highest of levels. From jobsite excellence to breakthrough advances in protecting the hammer, machines, operators and the environment, the HB Series' ability to adapt to demolition's needs allows it to lead the world of demolition. In fact, our hammers have lasted, while performing under conditions specified in our manuals and used properly according to the tasks, over 2,000 hours longer than traditional hammers.

Our hydraulic hammers are full of innovation:

- **The hydraulic integrated system that cancels vein hits, thus avoiding tool, piston and block tool breaks.**
- **They boast the reinforced strength and durability that comes from being manufactured entirely with HARDOX and STRENX.**
- **Two integrated shock absorber systems, one external and one internal, protect the operator from vibrations.**
- **A closed-case enforced with shock absorbers to mute sound levels to below legal limits, thus allowing for work in all cities.**
- **An accident-prevention system that blocks the entrance of external parts into the hammer during use, thus extending the life of the equipment.**





# HAMMERING OUT ADVANCED DETAILS

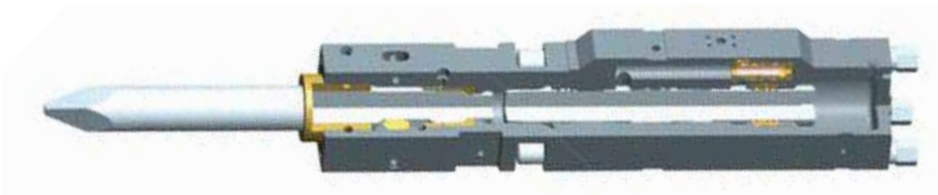
## HB SERIES LIGHT

HYDRAULIC HAMMERS



### TECHNICAL DATA

| HB LIGHT                 |                | HB140       | HB180       | HB250        | HB350         | HB580         |
|--------------------------|----------------|-------------|-------------|--------------|---------------|---------------|
| HYDRAULIC BREAKER WEIGHT | <i>Kg</i>      | 130         | 180         | 250          | 350           | 580           |
|                          | <i>lbs</i>     | 287         | 397         | 551          | 772           | 1279          |
| HEIGHT WITH THE CHISEL   | <i>mm</i>      | 990         | 1230        | 1280         | 1480          | 1800          |
|                          | <i>in.</i>     | 38.97       | 48.42       | 50.39        | 58.26         | 70.86         |
| DEMOLITION TOOL DIAMETER | <i>mm</i>      | 42          | 55          | 63           | 77            | 92            |
|                          | <i>in</i>      | 1.65        | 2.16        | 2.48         | 3.03          | 3.62          |
| OIL CAPACITY             | <i>l/min</i>   | 15/30       | 25/50       | 30/60        | 50/90         | 60/100        |
|                          | <i>gal/min</i> | 3,95 / 7,93 | 6,6 / 13,2  | 7,93 / 15,85 | 13,21 / 23,78 | 15,85 / 26,42 |
| STRIKE FREQUENCY         | <i>s/min</i>   | 700/1400    | 600/1200    | 500/1000     | 400/850       | 400/850       |
| WORKING PRESSURE         | <i>bar</i>     | 90/120      | 90/120      | 100/130      | 120/150       | 130/160       |
|                          | <i>psi</i>     | 1305 / 1740 | 1305 / 1740 | 1450 / 1885  | 1740 / 2176   | 1885 / 2321   |
| ENERGY PER STRIKE        | <i>joule</i>   | 190         | 330         | 450          | 750           | 1300          |
|                          | <i>ft lbs</i>  | 140         | 243         | 332          | 553           | 959           |
| EXCAVATOR TO BE USED     | <i>ton</i>     | 0,8/2,5     | 2,5/4,5     | 3/5,5        | 6/9           | 7/14          |
|                          | <i>lbs</i>     | 1764 / 5512 | 5512 / 9221 | 6614 / 12125 | 13228 / 19841 | 15432 / 30864 |



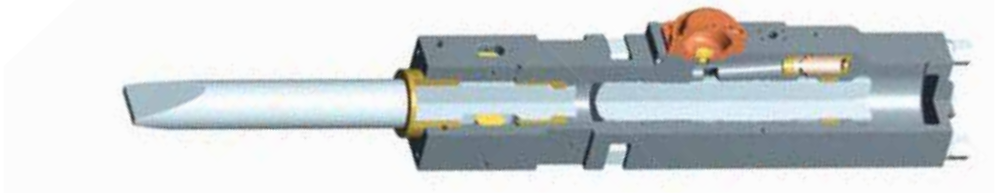
## HB SERIES MEDIUM

HYDRAULIC HAMMERS



### TECHNICAL DATA

| HB MEDIUM                |                | HB910         | HB1250        | HB1500        | HB1900        | HB2450        |
|--------------------------|----------------|---------------|---------------|---------------|---------------|---------------|
| HYDRAULIC BREAKER WEIGHT | <i>Kg</i>      | 900           | 1200          | 1450          | 1850          | 2400          |
|                          | <i>lbs</i>     | 1984          | 2646          | 3197          | 4079          | 5291          |
| HEIGHT WITH THE CHISEL   | <i>mm</i>      | 2050          | 2280          | 2400          | 2420          | 2650          |
|                          | <i>in</i>      | 81            | 90            | 94            | 95            | 104           |
| DEMOLITION TOOL DIAMETER | <i>mm</i>      | 102           | 127           | 130           | 137           | 152           |
|                          | <i>in</i>      | 4.01          | 5             | 5.12          | 5.39          | 5.98          |
| OIL CAPACITY             | <i>l/min</i>   | 80/110        | 90/120        | 100/145       | 100/155       | 180/240       |
|                          | <i>gal/min</i> | 21,13 / 29,06 | 23,78 / 31,70 | 26,42 / 38,30 | 26,42 / 40,95 | 47,55 / 63,40 |
| STRIKE FREQUENCY         | <i>s/min</i>   | 300/700       | 300/700       | 350/550       | 350/600       | 350/600       |
| WORKING PRESSURE         | <i>bar</i>     | 150/170       | 150/170       | 160/180       | 160/180       | 160/180       |
|                          | <i>psi</i>     | 2176 / 2466   | 2176 / 2466   | 2321 / 2611   | 2321 / 2611   | 2321 / 2611   |
| ENERGY PER STRIKE        | <i>joule</i>   | 2000          | 3000          | 4000          | 4500          | 6000          |
|                          | <i>ft lbs</i>  | 1475          | 2213          | 2950          | 3319          | 4425          |
| EXCAVATOR TO BE USED     | <i>ton</i>     | 11/16         | 15/18         | 16/22         | 18/24         | 24/36         |
|                          | <i>lbs</i>     | 24251 / 35274 | 33069 / 39683 | 35274 / 48502 | 39683 / 52911 | 52911 / 79366 |



# HAMMERING OUT ADVANCED DETAILS

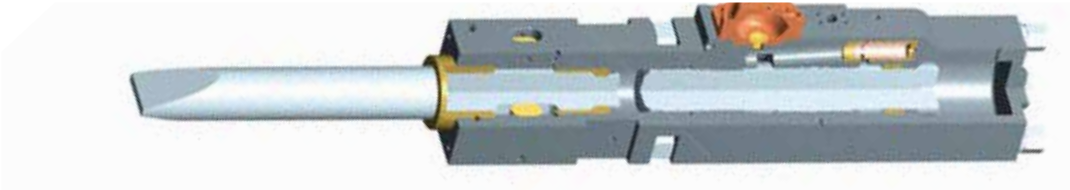
## HB SERIES HEAVY

HYDRAULIC HAMMERS



### TECHNICAL DATA

| HB HEAVY                 |         | HB3000        | HB4000         | HB5000         | HB6000          | HB8000          | HB10000         |
|--------------------------|---------|---------------|----------------|----------------|-----------------|-----------------|-----------------|
| HYDRAULIC BREAKER WEIGHT | Kg      | 3050          | 3800           | 4800           | 5800            | 7400            | 10000           |
|                          | lbs     | 6724          | 8378           | 10582          | 12787           | 16314           | 22046           |
| HEIGHT WITH THE CHISEL   | mm      | 2980          | 3180           | 3250           | 4000            | 4500            | 5000            |
|                          | in.     | 117.3         | 125.1          | 127.9          | 157.4           | 177.1           | 196.8           |
| DEMOLITION TOOL DIAMETER | mm      | 162           | 177            | 180            | 202             | 205             | 240             |
|                          | in.     | 6.37          | 6.96           | 7.08           | 7.95            | 8.07            | 9.44            |
| OIL CAPACITY             | l/min   | 200/260       | 240/320        | 260/360        | 310/390         | 350/420         | 450/530         |
|                          | gal/min | 52,83 / 68,68 | 63,40 / 84,54  | 68,68 / 95,10  | 81,89 / 103,03  | 92,46 / 110,95  | 118,88 / 140,01 |
| STRIKE FREQUENCY         | s/min   | 250/500       | 250/500        | 250/500        | 250/360         | 280/350         | 250/320         |
| WORKING PRESSURE         | bar     | 160/180       | 160/180        | 160/190        | 170/210         | 170/210         | 170/210         |
|                          | psi     | 2321 / 2611   | 2321 / 2611    | 2321 / 2756    | 2466 / 3046     | 2466 / 3046     | 2466 / 3046     |
| ENERGY PER STRIKE        | joule   | 9500          | 12000          | 13700          | 14500           | 17000           | 19000           |
|                          | ft lbs  | 7007          | 8851           | 10105          | 10695           | 12539           | 14014           |
| EXCAVATOR TO BE USED     | ton     | 30/40         | 38/60          | 45/70          | 60/100          | 65/110          | 90/140          |
|                          | lbs     | 66139 / 88185 | 83776 / 132277 | 99208 / 154324 | 132277 / 220462 | 143300 / 242508 | 198416 / 308647 |



### MULTI-FUNCTIONAL FLEXIBILITY

## GR SERIES GRAPPLES

Secondary Demolition and Recycling

Our advanced lines of premiere demolition equipment continue to grow: introducing the GR Grapples Series. Built with steel for maximum strength, they are extremely resistant to wear-and-tear while making easy work of handling materials such as wood and bricks. They are also ideal for facilitating recycling. Additional highlights of this exciting new line include:

- A 360° hydraulic rotation to guarantee precision placement.
- A hydraulic cylinder synchronized to a piston rod system for facilitating homogeneous movement.
- Interchangeable blades.



| MODEL GR              |         | GR3         | GR5          | GR7           | GR10          | GR15          | GR20          | GR25           | GR30           | GR40            |
|-----------------------|---------|-------------|--------------|---------------|---------------|---------------|---------------|----------------|----------------|-----------------|
| GRAPPLE OPENING       | mm      | 1050        | 1140         | 1650          | 1760          | 1885          | 2025          | 2200           | 2400           | 3000            |
|                       | in.     | 41          | 45           | 65            | 69            | 74            | 80            | 87             | 95             | 118             |
| GRAPPLE WIDTH         | mm      | 400         | 500          | 700           | 800           | 1000          | 1200          | 1400           | 1500           | 1500            |
|                       | in.     | 16          | 20           | 27.5          | 31.5          | 39.5          | 47            | 55             | 59             | 59              |
| TOOL HEIGHT           | mm      | 800         | 840          | 1290          | 1480          | 1525          | 1610          | 1700           | 1800           | 2300            |
|                       | in.     | 32          | 33           | 51            | 58            | 60            | 63            | 67             | 71             | 90              |
| EXCAVATOR WEIGHT      | Ton     | 2,5/4       | 4/10         | 9/14          | 14/18         | 17/22         | 22/30         | 30/50          | 35/60          | 50/65           |
|                       | lbs     | 5511 / 8818 | 8818 / 22046 | 19842 / 30864 | 30864 / 48502 | 37479 / 48502 | 48502 / 66139 | 66139 / 110231 | 77162 / 132277 | 110231 / 143300 |
| WEIGHT                | Kg      | 250         | 370          | 760           | 1040          | 1380          | 1780          | 2450           | 2800           | 3500            |
|                       | lbs     | 551         | 815          | 1675          | 2293          | 3042          | 3924          | 5401           | 6173           | 7716            |
| OIL PRESSURE          | Bar     | 200         | 200          | 250           | 300           | 300           | 300           | 300            | 300            | 330             |
|                       | psi     | 2900        | 2900         | 3626          | 4351          | 4351          | 4351          | 4351           | 4351           | 4786            |
| OIL CAPACITY          | L/min   | 25          | 25           | 50            | 50            | 50            | 50            | 60             | 120            | 150             |
|                       | gal/min | 6           | 6            | 13            | 13            | 13            | 13            | 16             | 32             | 40              |
| ROTATION OIL PRESSURE | Bar     | 20          | 20           | 60            | 60            | 60            | 60            | 60             | 100            | 100             |
|                       | psi     | 290         | 290          | 870           | 870           | 870           | 870           | 870            | 1450           | 1450            |
| ROTATION OIL CAPACITY | L/min   | 2           | 2            | 25            | 30            | 30            | 30            | 40             | 40             | 60              |
|                       | gal/min | 0.53        | 0.53         | 6.6           | 8             | 8             | 8             | 11             | 11             | 16              |
| HYDRAULIC ROTATION    |         | 360°        | 360°         | 360°          | 360°          | 360°          | 360°          | 360°           | 360°           | 360°            |



# TOP OF THE SCRAP HEAP

## SH SERIES STEEL SHEARS

Primary, Secondary Demolition

When it's time to process structures, tanks, pipes, or anything else made from iron or steel, then it's time for the SH Series of shears from OSA Demolition.

Made entirely from Hardox® and Strenx® steels, these shears deliver a superior amount of cutting force, ensuring a fast and efficient job every time.



The SH Series of shears also features:



An innovative pressure relief valve that protects the shear components from damage in overpressure situations.



Reversed hydraulic cylinders and a regenerative speed valve that increases productivity by 30%.



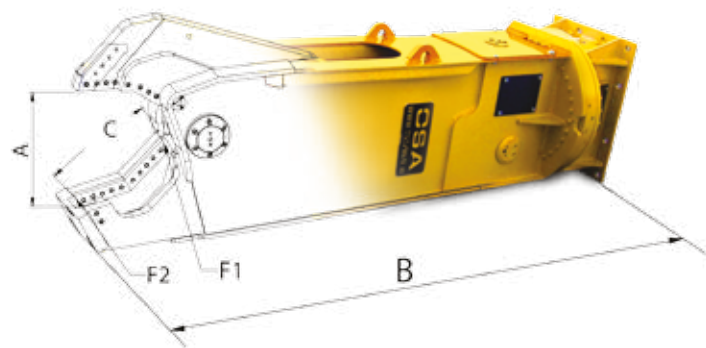
Interchangeable and reversible blades for precision cutting and a long life.



360° degree continuous hydraulic rotation in both directions.



A double register blade guide to ensure precise alignment during stressful cutting conditions.



[www.iai-usa.com](http://www.iai-usa.com)  
1-877-219-1962

| MODEL SH                         |         | SH6           | SH12          | SH20          | SH25          | SH35          | SH40           | SH55            | SH70            | SH80            | SH100           | SH120           |
|----------------------------------|---------|---------------|---------------|---------------|---------------|---------------|----------------|-----------------|-----------------|-----------------|-----------------|-----------------|
| OPENING ( A )                    | mm      | 365           | 440           | 470           | 550           | 590           | 680            | 800             | 850             | 880             | 920             | 950             |
|                                  | in.     | 14            | 17            | 18            | 21            | 23            | 26             | 31              | 33              | 34              | 36              | 37              |
| LENGTH ( B )                     | mm      | 1880          | 2450          | 3040          | 3060          | 3520          | 3660           | 4100            | 4700            | 4800            | 5000            | 5300            |
|                                  | in.     | 74            | 96.5          | 119           | 120           | 138           | 144            | 161             | 185             | 189             | 197             | 209             |
| DEPTH ( C )                      | mm      | 240           | 400           | 500           | 510           | 590           | 600            | 690             | 800             | 830             | 900             | 950             |
|                                  | in.     | 9.5           | 15.75         | 19.7          | 20.1          | 23.2          | 23.6           | 27.2            | 31.5            | 32.7            | 35.4            | 37.4            |
| EXCAVATOR WEIGHT<br>BUCKET PLACE | Ton     | 7/12          | 12/18         | 18/30         | 26/34         | 34/40         | 40/50          | 50/70           | 70/100          | 80/110          | 90/120          | 100/130         |
|                                  | lbs     | 15432 / 26455 | 26455 / 39683 | 39683 / 66139 | 57320 / 74957 | 74957 / 88185 | 88185 / 110231 | 110231 / 154324 | 154324 / 220462 | 176370 / 242508 | 198416 / 264555 | 220462 / 286601 |
| EXCAVATOR WEIGHT<br>BOOM PLACE   | Ton     | 4/7           | 7/10          | 14/18         | 16/22         | 22/30         | 26/35          | 30/45           | 45/60           | 50/70           | 70/90           | 90/110          |
|                                  | lbs     | 8818 / 15432  | 15432 / 22046 | 30864 / 39683 | 35274 / 48502 | 48502 / 66139 | 57320 / 77162  | 66139 / 99208   | 99208 / 132277  | 110231 / 154324 | 154324 / 198416 | 198416 / 242508 |
| EQUIPMENT WEIGHT                 | Kg      | 640           | 1250          | 2030          | 2530          | 3200          | 3910           | 5630            | 6900            | 7800            | 9950            | 11500           |
|                                  | lbs     | 1411          | 2756          | 4475          | 5578          | 7055          | 8620           | 12412           | 15212           | 17196           | 21936           | 25353           |
| MAX PRESSURE                     | Bar     | 250           | 310           | 320           | 320           | 320           | 330            | 330             | 330             | 330             | 340             | 340             |
|                                  | psi     | 3625          | 4496          | 4641          | 4641          | 4641          | 4786           | 4786            | 4786            | 4786            | 4931            | 4931            |
| OIL MAX CAPACITY                 | L/min   | 80/100        | 150/220       | 200/220       | 200/240       | 240/300       | 300/350        | 350/450         | 350/400         | 400/500         | 500/800         | 700/900         |
|                                  | gal/min | 21 / 26       | 40 / 58       | 53 / 58       | 53 / 63       | 63 / 79       | 79 / 92        | 92 / 119        | 92 / 106        | 106 / 132       | 132 / 211       | 185 / 238       |
| ROTATION OIL PRESSURE            | Bar     | 60            | 60            | 60            | 60            | 60            | 60             | 100             | 100             | 100             | 100             | 100             |
|                                  | psi     | 870           | 870           | 870           | 870           | 870           | 870            | 1450            | 1450            | 1450            | 1450            | 1450            |
| ROTATION OIL CAPACITY            | L/min   | 10            | 30            | 30            | 30            | 30            | 30             | 60              | 60              | 60              | 60              | 60              |
|                                  | gal/min | 2.7           | 8             | 8             | 8             | 8             | 8              | 16              | 16              | 16              | 16              | 16              |
| HYDRAULIC ROTATION               |         | 360°          | 360°          | 360°          | 360°          | 360°          | 360°           | 360°            | 360°            | 360°            | 360°            | 360°            |
| F1 TIGHTENING FORCE              | Ton     | 210           | 300           | 390           | 500           | 700           | 800            | 1000            | 1100            | 1200            | 1300            | 1500            |
|                                  | lbs     | 462971        | 661387        | 859803        | 1102311       | 1543236       | 1763698        | 2204623         | 2425085         | 2645547         | 2866010         | 3306934         |
| F2 TIGHTENING FORCE              | Ton     | 60            | 65            | 90            | 120           | 150           | 165            | 220             | 230             | 240             | 270             | 280             |
|                                  | lbs     | 132277        | 143301        | 198416        | 264555        | 330693        | 363763         | 485017          | 507063          | 529109          | 595248          | 617294          |



# EVERYDAY DEMOLITION

## RS SERIES CRUSHER

### Primary Demolition

Introducing the RS series. Designed to demolish, made to advance. Where high-quality function merges with highly intelligent materials to produce concrete-crushing machines that also crush the expectations for how much noise and vibrations they produce.

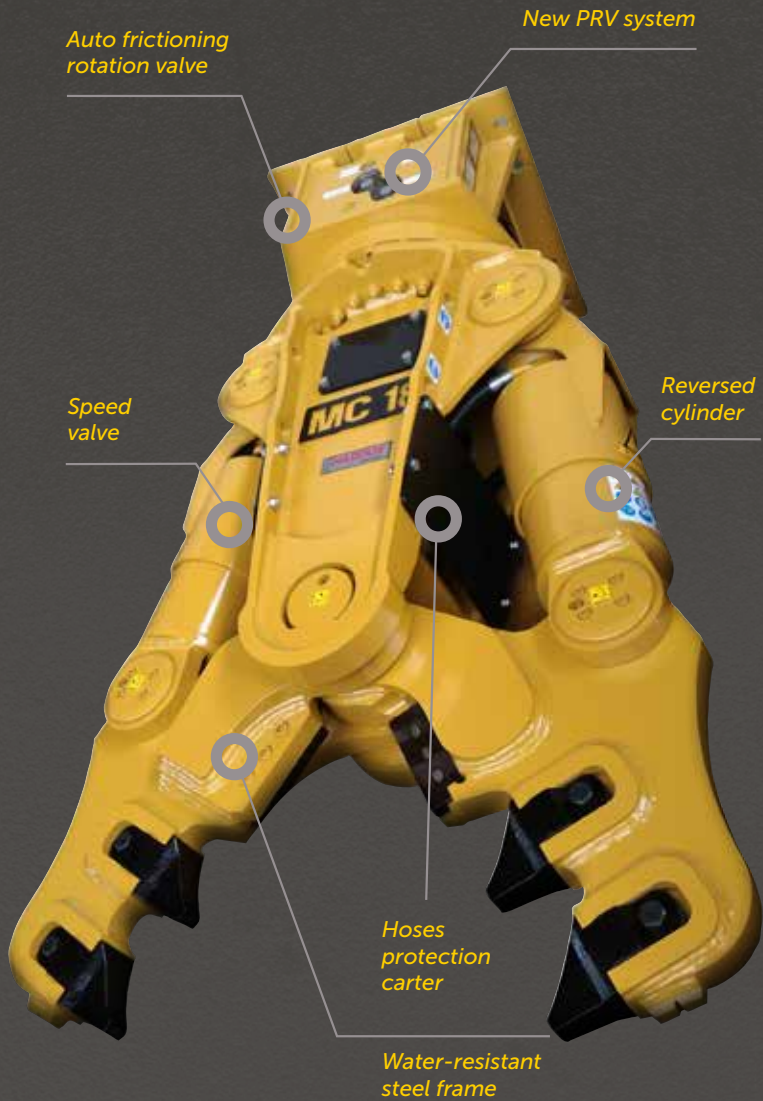
- Entirely made in HARDOX and STRENX.
- Boasts two large cylinders.
- Regenerative installation available in select models.
- Hydraulic Rotation comes standard.
- Continuous, precision 360° rotation in both directions thanks to an integrated hydraulic installations.
- Fast, accurate and efficient jaw positioning in and work condition.
- Ideal for excavators with long arms.
- Equipped with specialty clutch that permits a 360° rotation in both directions; ideal for excavators that do not have a rotation installation.



| MODEL RS              |         | RS 200      | RS 500       | RS 1000       | RS 1500      | RS 1800      | RS 2000      | RS 2500        | RS 4000        | RS 5000        | RS 6000        | RS 8000        | RS 11000       |
|-----------------------|---------|-------------|--------------|---------------|--------------|--------------|--------------|----------------|----------------|----------------|----------------|----------------|----------------|
| JAW OPENING           | mm      | 250         | 405          | 600           | 710          | 840          | 920          | 1100           | 1350           | 1500           | 1650           | 1830           | 2000           |
|                       | in.     | 9.84        | 15.94        | 23.62         | 27.95        | 33.07        | 36.22        | 43.3           | 53.14          | 59.05          | 64.96          | 72.04          | 78.74          |
| TOOL HEIGHT           | mm      | 840         | 1020         | 1700          | 2010         | 2300         | 2300         | 2700           | 2800           | 2850           | 3000           | 3200           | 3500           |
|                       | in.     | 33.07       | 40.15        | 66.92         | 79.13        | 90.55        | 90.55        | 106.29         | 110.23         | 112.2          | 118.11         | 125.98         | 137.7          |
| BLADE LENGTH          | mm      | 120         | 140          | 160           | 160          | 220          | 220          | 220            | 260            | 320            | 320            | 320            | 360            |
|                       | in.     | 4.72        | 5.51         | 6.29          | 6.29         | 8.66         | 8.66         | 8.66           | 10.23          | 12.59          | 12.59          | 12.59          | 14.17          |
| EXCAVATOR WEIGHT      | Ton     | 1,5/3       | 4/10         | 12/16         | 16/22        | 22/30        | 30/40        | 35/50          | 36/49          | 50/65          | 60/80          | 80/100         | 85/130         |
|                       | lbs     | 3307 / 6614 | 8818 / 22046 | 26455 / 35274 | 35274/ 48502 | 48502 /66139 | 66139/ 88185 | 77161 / 110231 | 79366 / 108026 | 110231/ 143300 | 132277/ 176370 | 176370/ 220462 | 187393/ 286601 |
| WEIGHT                | Kg      | 210         | 380          | 1150          | 1400         | 1900         | 2200         | 2750           | 3800           | 4800           | 5800           | 7900           | 11000          |
|                       | lbs     | 463         | 837          | 2535          | 3086         | 4189         | 4850         | 6063           | 8378           | 10582          | 12787          | 17416          | 24251          |
| OIL PRESSURE          | Bar     | 220         | 250          | 300           | 310          | 320          | 320          | 320            | 340            | 340            | 340            | 340            | 340            |
|                       | psi     | 3191        | 3626         | 4351          | 4496         | 4641         | 4641         | 4641           | 4931           | 4931           | 4931           | 4931           | 4931           |
| OIL CAPACITY          | L/min   | 20/30       | 30/50        | 200/220       | 220/240      | 240/280      | 300/320      | 300/340        | 300/380        | 350/400        | 380/450        | 400/500        | 500/ 600       |
|                       | gal/min | 5/8         | 8/13         | 53/58         | 58/63        | 63/74        | 79/85        | 79/90          | 79/100         | 92/106         | 100/119        | 106/132        | 132/159        |
| ROTATION OIL PRESSURE | Bar     |             | 20           | 60            | 60           | 60           | 60           | 60             | 60             | 100            | 100            | 100            | 100            |
|                       | psi     |             | 290          | 870           | 870          | 870          | 870          | 870            | 870            | 1450           | 1450           | 1450           | 1450           |
| ROTATION OIL CAPACITY | L/min   |             | 1/2          | 30            | 30           | 30           | 30           | 40             | 40             | 60             | 60             | 60             | 60             |
|                       | gal/min |             | 0,26/0,53    | 8             | 8            | 8            | 8            | 11             | 11             | 16             | 16             | 16             | 16             |
| HYDRAULIC ROTATION    |         |             | 360°         | 360°          | 360°         | 360°         | 360°         | 360°           | 360°           | 360°           | 360°           | 360°           | 360°           |
| BLADE CLAMPING FORCE  | Ton     | 75          | 80           | 185           | 200          | 230          | 270          | 320            | 330            | 480            | 590            | 740            | 810            |
|                       | lbs     | 165347      | 176370       | 407855        | 440924       | 507063       | 595248       | 705479         | 727526         | 1058219        | 1300727        | 1631421        | 1785744        |
| TIP CLAMPING FORCE    | Ton     | 25          | 25           | 75            | 85           | 95           | 105          | 125            | 130            | 140            | 150            | 190            | 235            |
|                       | lbs     | 55116       | 55116        | 165347        | 187393       | 209439       | 231485       | 275578         | 286601         | 308647         | 330693         | 418878         | 518086         |



THE INDUSTRY'S STRONGEST GRIP



MC SERIES

MULTISYSTEMS

Primary and Secondary Demolition

Featuring an innovative “PRV” (Pressure Relief Valve) that protects the pulverizer from high pressure. Reinforced strength and durability from being manufactured with HARDOX 400. A reversed cylinder for ultimate rod protection. A fast-action valve. Interchangeable blades. An innovative interchangeable teeth system.

- Entirely made in HARDOX and STRENX.
- Boasts two large cylinders.
- Regenerative installation available in select models.
- Hydraulic Rotation comes standard.
- Continuous, precision 360° rotation in both directions thanks to an integrated hydraulic installations.
- Fast, accurate and efficient jaw positioning in and work condition.
- Ideal for excavators with long arms.
- Equipped with specialty clutch that permits a 360° rotation in both directions; ideal for excavators that do not have a rotation installation.



SPECIALIZED KITS:



**CRUSHER KIT**  
Concrete structures = demolished.



**UNIVERSAL KIT**  
Designed for primary and secondary demolition, simultaneously cuts metal bars and concrete.



**COMBI-CUTTER KIT**  
Designed for tackling concrete and metallic structures during mixed demolitions.



**PULVERIZER KIT**  
A go-to tool for secondary demolition: it separates rods from concrete.



**SHEAR KIT**  
The tool for cutting ferrous materials, including structural steel, pipelines, tanks, sheets and ferrous carcasses.



**SHEET KIT**  
When precision and finesse are absolutely needed, this is the kit the job requires. From cutting sheets on the ground to demolishing metallic tanks, this kit delivers the confidence to get the job done error-free

| MODEL MC                |         | MC5          | MC7           | MC10          | MC15          | MC18          | MC24          | MC30          | MC40           | MC55            | MC80            | MC110           |
|-------------------------|---------|--------------|---------------|---------------|---------------|---------------|---------------|---------------|----------------|-----------------|-----------------|-----------------|
| JAW OPENING             | mm      | 410          | 525           | 670           | 710           | 800           | 850           | 920           | 1150           | 1300            | 1700            | 1900            |
|                         | in.     | 16.15        | 20.7          | 26.4          | 27.95         | 31.5          | 33.5          | 36.2          | 45.28          | 51.18           | 66.93           | 74.8            |
| TOOL HEIGHT             | mm      | 1020         | 1446          | 1680          | 1900          | 2050          | 2200          | 2420          | 2600           | 2850            | 3200            | 3500            |
|                         | in.     | 40.2         | 56.9          | 66.1          | 74.8          | 80.7          | 86.6          | 95.3          | 102.4          | 112.2           | 126             | 137.8           |
| EXCAVATOR WEIGHT        | Ton     | 4/8          | 7/11          | 12/15         | 14/19         | 21/28         | 26/36         | 30/38         | 36/50          | 50/70           | 80/100          | 85/130          |
|                         | lbs     | 8818 / 17637 | 15432 / 24251 | 26455 / 33069 | 30865 / 41888 | 46297 / 61729 | 57320 / 79366 | 66139 / 83776 | 79366 / 110231 | 110231 / 154324 | 176370 / 220462 | 187393 / 286601 |
| BLADES TIGHTENING FORCE | Ton     | 80           | 125           | 185           | 200           | 230           | 310           | 325           | 330            | 500             | 720             | 760             |
|                         | lbs     | 176370       | 275578        | 407855        | 440924        | 507063        | 683433        | 716502        | 727525         | 1102311         | 1587328         | 1675513         |
| TIPS TIGHTENING FORCE   | Ton     | 25           | 50            | 75            | 85            | 95            | 110           | 125           | 130            | 150             | 190             | 230             |
|                         | lbs     | 55116        | 110231        | 165347        | 187393        | 209439        | 242508        | 275578        | 286601         | 330693          | 418878          | 507063          |
| EQUIPMENT WEIGHT        | Kg      | 400          | 720           | 1000          | 1400          | 1900          | 2450          | 3120          | 3800           | 5200            | 7800            | 10800           |
|                         | lbs     | 881          | 1587          | 2204          | 3086          | 4188          | 5401          | 6878          | 8377           | 11464           | 17196           | 23810           |
| MAX PRESSURE            | Bar     | 250          | 300           | 300           | 320           | 320           | 320           | 320           | 320            | 340             | 340             | 340             |
|                         | psi     | 3625         | 4351          | 4351          | 4641          | 4641          | 4641          | 4641          | 4641           | 4931            | 4931            | 4931            |
| OIL MAX CAPACITY        | L/min   | 30/50        | 140/180       | 150/160       | 200/240       | 220/260       | 240/300       | 240/300       | 300/350        | 300/380         | 400/500         | 500/600         |
|                         | gal/min | 7 / 13       | 37 / 48       | 39 / 42       | 58 / 63       | 58 / 68       | 63 / 79       | 63 / 79       | 79 / 92        | 79 / 100        | 106 / 132       | 132 / 158       |
| ROTATION OIL PRESSURE   | Bar     | 20           | 60            | 60            | 60            | 60            | 60            | 60            | 60             | 100             | 100             | 100             |
|                         | psi     | 290          | 870           | 870           | 870           | 870           | 870           | 870           | 870            | 1450            | 1450            | 1450            |
| ROTATION OIL CAPACITY   | L/min   | 2            | 25            | 30            | 30            | 30            | 30            | 30            | 30             | 60              | 60              | 60              |
|                         | gal/min | 0.53         | 6.6           | 8             | 8             | 8             | 8             | 8             | 8              | 16              | 16              | 16              |
| HYDRAULIC ROTATION      |         | 360°         | 360°          | 360°          | 360°          | 360°          | 360°          | 360°          | 360°           | 360°            | 360°            | 360°            |
| CRUSHER KIT WEIGHT      | Kg      | 76           | 175           | 250           | 360           | 420           | 780           | 820           | 950            | 1400            | 2580            | 3500            |
|                         | lbs     | 167          | 386           | 551           | 793           | 925           | 1719          | 1808          | 2094           | 3086            | 5688            | 7716            |
| OPENING ( A )           | mm      | 410          | 525           | 670           | 710           | 800           | 850           | 920           | 1150           | 1300            | 1700            | 1900            |
|                         | in.     | 16.15        | 20.7          | 26.4          | 27.95         | 31.5          | 33.5          | 36.2          | 45.28          | 51.18           | 66.93           | 74.8            |
| POLVERIZER KIT WEIGHT   | Kg      | 100          | 250           | 310           | 420           | 500           | 820           | 850           | 1250           | 1620            | 2800            | 3800            |
|                         | lbs     | 220          | 551           | 683           | 926           | 1102          | 1808          | 1874          | 2756           | 3571            | 6173            | 8378            |
| OPENING ( A )           | mm      | 310          | 500           | 600           | 680           | 800           | 830           | 900           | 980            | 1100            | 1600            | 1800            |
|                         | in.     | 12.2         | 19.7          | 23.6          | 26.8          | 31.5          | 32.7          | 35.4          | 38.6           | 43.3            | 63              | 70.9            |
| SHEAR KIT WEIGHT        | Kg      | 92           | 180           | 240           | 400           | 430           | 700           | 780           | 1100           | 1580            | 2000            | 2500            |
|                         | lbs     | 203          | 397           | 529           | 882           | 948           | 1543          | 1720          | 2425           | 3483            | 4409            | 5511            |
| OPENING ( A )           | mm      | 340          | 270           | 350           | 360           | 460           | 510           | 560           | 620            | 700             | 750             | 800             |
|                         | in.     | 13.4         | 10.7          | 13.8          | 14.2          | 18.1          | 20.1          | 22            | 24.4           | 27.6            | 29.5            | 31.5            |
| COMBY-CUTTER KIT WEIGHT | Kg      |              |               | 300           | 430           | 470           | 750           | 780           | 1150           | 1350            | 2550            | 3750            |
|                         | lbs     |              |               | 661           | 948           | 1036          | 1653          | 1720          | 2535           | 2976            | 5622            | 8267            |
| OPENING ( A )           | mm      |              |               | 660           | 700           | 770           | 820           | 870           | 1100           | 1300            | 1600            | 1750            |
|                         | in.     |              |               | 26            | 27.6          | 30.3          | 32.3          | 34.25         | 43.3           | 51.2            | 63              | 68.9            |
| IRON KIT WEIGHT         | Kg      |              |               |               |               | 585           | 840           | 950           | 1200           | 1645            |                 |                 |
|                         | lbs     |              |               |               |               | 1290          | 1852          | 2094          | 2645           | 3627            |                 |                 |
| OPENING ( A )           | mm      |              |               |               |               | 220           | 240           | 240           | 240            | 425             |                 |                 |
|                         | in.     |              |               |               |               | 8.7           | 9.45          | 9.45          | 9.45           | 16.73           |                 |                 |
| UNIVERSAL KIT WEIGHT    | Kg      |              |               | 320           | 430           | 580           | 850           | 900           | 1150           | 1650            | 2600            |                 |
|                         | lbs     |              |               | 705           | 948           | 1279          | 1874          | 1984          | 2535           | 3638            | 5732            |                 |
| OPENING ( A )           | mm      |              |               | 600           | 680           | 630           | 770           | 800           | 820            | 1000            | 1400            |                 |
|                         | in.     |              |               | 23.6          | 26.8          | 24.8          | 30.3          | 31.5          | 32.3           | 39.4            | 55.1            |                 |



A PULVERIZING LEVEL OF HIGH QUALITY

RV SERIES ROTATING PULVERIZER

Primary, Secondary Demolition and Recycling

The RV Series. Specialists in the field of primary and secondary demolition. Manufactured specifically with HARDOX 400 for maximum wear and tear resistance, the RV hydraulic rotating pulverizers come equipped with a regenerative circuit for ultra responsive opening and closing of their powerful jaws. The RV series is further strengthened by a hydraulic rotation (360\*) that allows maximum precision for pulverizer placement in any working condition.

- Featuring an innovative "PRV" (Pressure Relief Valve) that protects the pulverizer from high pressure.
- Reinforced strength and durability from being manufactured with HARDOX 400.
- A reversed cylinder for ultimate rod protection.
- A fast-action valve.
- Interchangeable blades.
- An innovative interchangeable teeth system.



| MODEL RV              |         | RV6           | RV10          | RV16          | RV20          | RV25          | RV30          | RV40           | RV60            | RV80            | RV110           |
|-----------------------|---------|---------------|---------------|---------------|---------------|---------------|---------------|----------------|-----------------|-----------------|-----------------|
| JAW OPENING           | mm      | 520           | 630           | 780           | 820           | 910           | 1040          | 1130           | 1280            | 1350            | 1720            |
|                       | in.     | 20            | 25            | 30            | 32            | 36            | 41            | 45             | 50              | 53              | 68              |
| TOOL HEIGHT           | mm      | 1410          | 1900          | 2330          | 2390          | 2510          | 2660          | 2850           | 3380            | 3400            | 3800            |
|                       | in.     | 55            | 75            | 92            | 94            | 99            | 105           | 112            | 133             | 134             | 150             |
| JAW WIDTH             | mm      | 340           | 380           | 460           | 480           | 480           | 510           | 550            | 570             | 620             | 650             |
|                       | in.     | 13.4          | 15            | 18.1          | 18.9          | 18.9          | 20.1          | 21.65          | 22.45           | 24.4            | 25.6            |
| BLADE LENGTH          | mm      | 140           | 160           | 160           | 200           | 240           | 240           | 240            | 240             | 300             | 300             |
|                       | in.     | 5.51          | 6.3           | 6.3           | 7.9           | 9.45          | 9.45          | 9.45           | 9.45            | 11.8            | 11.8            |
| EXCAVATOR WEIGHT      | Ton     | 7/12          | 9/15          | 15/20         | 18/26         | 24/32         | 30/40         | 38/55          | 50/80           | 70/90           | 90/120          |
|                       | lbs     | 15432 / 26455 | 19842 / 33069 | 33069 / 44092 | 39683 / 57320 | 52911 / 70548 | 66139 / 88185 | 83776 / 121254 | 110231 / 176370 | 154324 / 198416 | 198416 / 264555 |
| WEIGHT                | Kg      | 600           | 1050          | 1610          | 1900          | 2580          | 3040          | 3780           | 5610            | 7800            | 9950            |
|                       | lbs     | 1323          | 2315          | 3549          | 4189          | 5688          | 6702          | 8333           | 12367           | 17196           | 21936           |
| OIL PRESSURE          | Bar     | 250           | 310           | 320           | 320           | 320           | 320           | 320            | 320             | 330             | 340             |
|                       | psi     | 3625          | 4496          | 4641          | 4641          | 4641          | 4641          | 4641           | 4641            | 4786            | 4931            |
| OIL CAPACITY          | L/min   | 80/100        | 180/220       | 180/220       | 200/240       | 250/300       | 300/350       | 300/350        | 300/350         | 400/500         | 500/800         |
|                       | gal/min | 21 / 26       | 47 / 58       | 47 / 58       | 52 / 63       | 66 / 79       | 79 / 92       | 79 / 92        | 79 / 92         | 106 / 132       | 132 / 158       |
| ROTATION OIL PRESSURE | Bar     | 60            | 60            | 60            | 60            | 60            | 60            | 60             | 100             | 100             | 100             |
|                       | psi     | 870           | 870           | 870           | 870           | 870           | 870           | 870            | 1450            | 1450            | 1450            |
| ROTATION OIL CAPACITY | L/min   | 10            | 30            | 30            | 30            | 30            | 30            | 30             | 60              | 60              | 60              |
|                       | gal/min | 2.7           | 8             | 8             | 8             | 8             | 8             | 8              | 16              | 16              | 16              |
| HYDRAULIC ROTATION    |         | 360°          | 360°          | 360°          | 360°          | 360°          | 360°          | 360°           | 360°            | 360°            | 360°            |
| BLADE CLAMPING FORCE  | Ton     | 135           | 150           | 198           | 240           | 310           | 350           | 500            | 540             | 600             | 700             |
|                       | lbs     | 297624        | 330693        | 436515        | 529109        | 683433        | 771618        | 1102311        | 1190496         | 1322774         | 1543236         |
| BLADE CLAMPING FORCE  | Ton     | 40            | 45            | 70            | 80            | 105           | 120           | 140            | 175             | 200             | 250             |
|                       | lbs     | 88185         | 99208         | 154324        | 176370        | 231485        | 264555        | 308647         | 385809          | 440924          | 551156          |

TRULY GROUND BREAKING

FPV SERIES PULVERIZER

Secondary Demolition and Recycling

Introducing the rugged and dependable FPV Series. Featuring pulverizers specifically designed for working the ground This is the first rate solution to all secondary demolition needs. Additionally, this series is perfect for recycling and pulverization work. The FPV series also ease and simplify the charging and transporting of materials.

- HARDOX structures
- Feature a reversed cylinder to protect the rod from accidental hits
- Have interchangeable teeth
- Boast an innovative "PRV" (Pressure Relief Valve) to protect the pulverizer from high pressure
- Productivity is maximized thanks to a regenerative installation within the machine that allows for fast idle movements and maximum strength thrusts in just seconds.
- Interchangeable blades.



| MODEL FPV            |         | FPV6          | FPV12         | FPV17         | FPV20         | FPV30         | FPV45          | FPV60           | FPV100          |
|----------------------|---------|---------------|---------------|---------------|---------------|---------------|----------------|-----------------|-----------------|
| JAW OPENING          | mm      | 510           | 700           | 815           | 860           | 1040          | 1080           | 1130            | 1800            |
|                      | in.     | 20            | 27            | 32            | 34            | 41            | 42.5           | 44.5            | 71              |
| TOOL HEIGHT          | mm      | 1300          | 1920          | 2080          | 2300          | 2660          | 2700           | 2800            | 3200            |
|                      | in.     | 51            | 76            | 82            | 91            | 105           | 106            | 110             | 126             |
| JAW WIDTH            | mm      | 330           | 400           | 460           | 550           | 560           | 600            | 760             | 950             |
|                      | in.     | 13            | 15.75         | 18.1          | 21.65         | 22            | 23.6           | 29.9            | 37.4            |
| BLADE D              | mm      | 140           | 160           | 200           | 200           | 240           | 240            | 240             | 300             |
|                      | in.     | 5.51          | 6.3           | 7.9           | 7.9           | 9.45          | 9.45           | 9.45            | 11.8            |
| EXCAVATOR WEIGHT     | Ton     | 6/10          | 10/16         | 16/20         | 21/29         | 30/45         | 40/60          | 60/80           | 80/130          |
|                      | lbs     | 13228 / 22046 | 22046 / 35274 | 35274 / 44092 | 46297 / 63934 | 66139 / 99208 | 88184 / 132277 | 132277 / 176370 | 176370 / 286601 |
| WEIGHT               | Kg      | 500           | 1100          | 1550          | 2050          | 2800          | 4500           | 4900            | 10400           |
|                      | lbs     | 1102          | 2245          | 3417          | 4520          | 6173          | 9921           | 10803           | 22928           |
| OIL PRESSURE         | Bar     | 250           | 300           | 320           | 320           | 320           | 340            | 340             | 340             |
|                      | psi     | 3625          | 4351          | 4641          | 4641          | 4641          | 4931           | 4931            | 4931            |
| OIL CAPACITY         | L/min   | 80/100        | 180/220       | 200/240       | 250/300       | 300/350       | 300/350        | 400/500         | 500/600         |
|                      | gal/min | 21 / 26       | 47 / 58       | 52 / 63       | 66 / 79       | 79 / 92       | 79 / 92        | 106 / 132       | 132 / 158       |
| BLADE CLAMPING FORCE | Ton     | 130           | 170           | 200           | 240           | 340           | 450            | 490             | 550             |
|                      | lbs     | 286601        | 374786        | 440924        | 529109        | 749572        | 992080         | 1080265         | 1212542         |
| BLADE CLAMPING FORCE | Ton     | 35            | 60            | 75            | 90            | 120           | 145            | 170             | 240             |
|                      | lbs     | 77162         | 132277        | 165347        | 198416        | 264555        | 319670         | 374786          | 529109          |





GETS OUT OF THE WOODS QUICK

LIV SERIESWOOD SHEARS

Forestry-Recycling

From the forest to wood waste recycling, our hydraulic wood shears are a perfect for the downsizing of logs, railroad sleepers, tree stumps and wood demolition waste. The powerful jaws of the LIV series wood shears are built strong to attack even the toughest deforestation job. The LIV series wood shears are made of durable wear-resistant HARDOX and STRENX steels and feature a unique innovative design which allows the shear to perform exceptionally in any hard wood recycling application. This piece of equipment can handle big trees with large trunks and strong roots, reducing their size and leaving them ready for the next phase of removal.

- Constructed entirely with HARDOX and STRENX for superior strength and wear characteristics each unit carries the HARDOX seal of approval.
- Cutting jaw, blade and piercing tips are machined to shape from one solid piece of high tensile HARDOX wear plate to give extended maintenance free service intervals.
- Fully protected O.S.A cylinders provide unparalleled cutting force.
- Piecing tips for optimum performance in the downsizing and splitting of oversize logs and stumps.
- Designed in Australia by Ironbark, Manufacture by OSA with passion.



| MODEL LIV        |         | LIV 15      | LIV 20      |
|------------------|---------|-------------|-------------|
| OPENING          | mm      | 790         | 1000        |
|                  | in.     | 31.1        | 39.3        |
| LENGTH           | mm      | 2830        | 3500        |
|                  | in.     | 111.4       | 137.8       |
| WIDTH            | mm      | 530         | 650         |
|                  | in.     | 20.9        | 25.6        |
| EXCAVATOR WEIGHT | ton     | 14/22       | 22/30       |
|                  | lbs     | 30864/48501 | 48501/66138 |
| WEIGHT           | kg      | 1510        | 2100        |
|                  | lbs     | 3329        | 4629.7      |
| OIL PRESSURE     | bar     | 300         | 300         |
|                  | psi     | 4351        | 4351        |
| OIL CAPACITY     | l/min   | 200/240     | 240/300     |
|                  | gal/min | 53/63       | 63/79       |



THE PERFECT CUT

MW SERIESTREE SHEAR

Forestry

The MW series is designed to fell high-stem bushes, logs and also for reducing trees. It has a positioning boom and a cutting blade, making it able to position and cut the log. It is able to perform these two functions separately without the help of additional hydraulic connections on the excavator because of an integrated hydraulic system. Two strong cylinders guarantee high productivity standards, especially in the recycling phase of the operation.

MW advantages:

- Security
- Productivity
- Waste reuse and recycling



| MODEL MW              |         | MW 15       | MW 20       |
|-----------------------|---------|-------------|-------------|
| OPENING               | mm      | 700         | 850         |
|                       | in.     | 27.5        | 33.5        |
| LENGTH                | mm      | 2720        | 3045        |
|                       | in.     | 107.1       | 119.9       |
| WIDTH                 | mm      | 520         | 620         |
|                       | in.     | 20.4        | 24.4        |
| MAX DIAMETER          | mm      | 350         | 500         |
|                       | in.     | 13.8        | 19.7        |
| EXCAVATOR WEIGHT      | ton     | 12/18       | 20/30       |
|                       | lbs     | 26455/39683 | 44092/66138 |
| WEIGHT                | kg      | 1350        | 1750        |
|                       | lbs     | 2976.2      | 3858.1      |
| OLI PRESSURE          | bar     | 300         | 300         |
|                       | psi     | 4351        | 4351        |
| OLI CAPACITY          | l/min   | 180/200     | 180/200     |
|                       | gal/min | 47/53       | 47/53       |
| ROTATION OIL PRESSURE | bar     | 70          | 70          |
|                       | psi     | 1015        | 1015        |
| ROTATION OIL CAPACITY | l/min   | 30          | 30          |
|                       | gal/min | 7.9         | 7.9         |
| HYDRAULIC ROTATION    |         | 360°        | 360°        |





RESILIENT RESISTENT

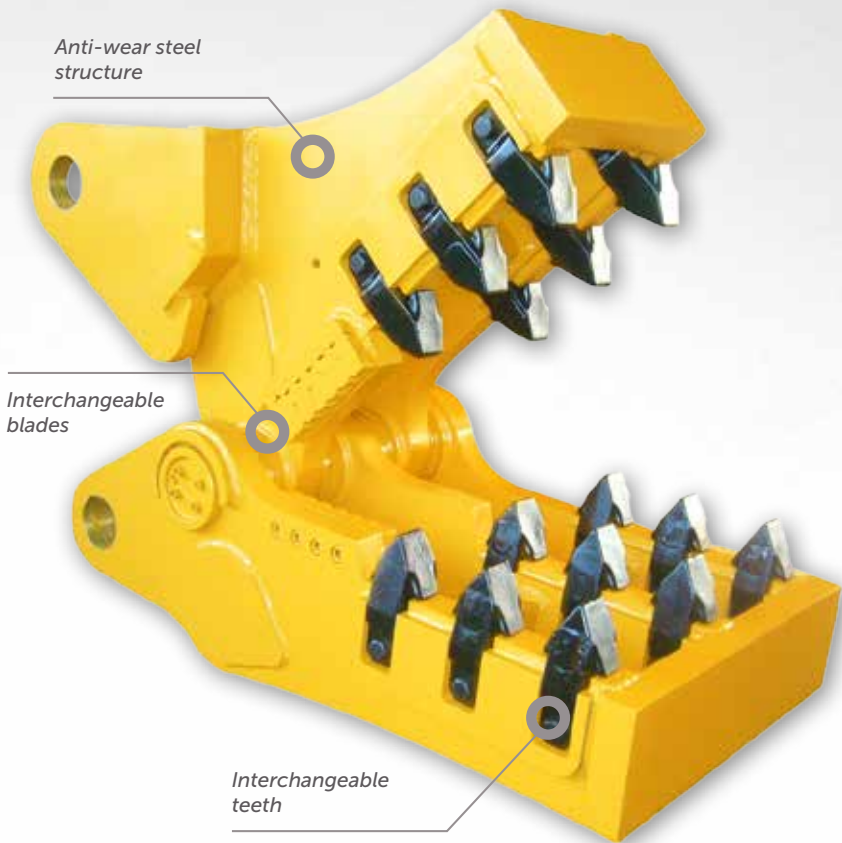
FM SERIESMECHANICAL PULVERIZERS

Secondary Demolition Recycling

Mechanical pulverisers OSA FM are extremely fast and strong. They have been designed for pulverizing all the material which derives from the demolition made in the building site and also that material which comes from the demolition of concrete structures, pillars and trellis made on the ground. They are also useful for separating reinforcing rods from concrete.

OSA FM mechanical pulverisers do not need any hydraulic installation because they use the piston pushing force of the excavator penetrating arm.

Fast, strong, powerful and solid they guarantee excellent working results.



| MODEL FM         |     | FM20          | FM25          | FM30          | FM40           | FM55            | FM65            | FM95            |
|------------------|-----|---------------|---------------|---------------|----------------|-----------------|-----------------|-----------------|
| JAW OPENING      | mm  | 900           | 1100          | 1150          | 1250           | 1350            | 1450            | 1550            |
|                  | in. | 35            | 43            | 45            | 49             | 53              | 57              | 61              |
| TOOL WIDTH       | mm  | 600           | 690           | 710           | 750            | 810             | 870             | 930             |
|                  | in. | 24            | 27            | 28            | 29.5           | 32              | 34              | 37              |
| BLADE LENGTH     | mm  | 200           | 200           | 240           | 240            | 240             | 280             | 280             |
|                  | in. | 7.9           | 7.9           | 9.45          | 9.45           | 9.45            | 11              | 11              |
| EXCAVATOR WEIGHT | Ton | 18/22         | 22/32         | 32/42         | 42/60          | 50/65           | 60/80           | 90/100          |
|                  | lbs | 39683 / 48502 | 48502 / 70548 | 70548 / 92594 | 92594 / 132277 | 110231 / 143300 | 132277 / 176370 | 198416 / 220462 |
| WEIGHT           | Kg  | 1000          | 1400          | 2000          | 2500           | 2800            | 4000            | 4900            |
|                  | lbs | 2205          | 3086          | 4409          | 5512           | 6173            | 8818            | 10803           |



ALL DAY EVERYDAY

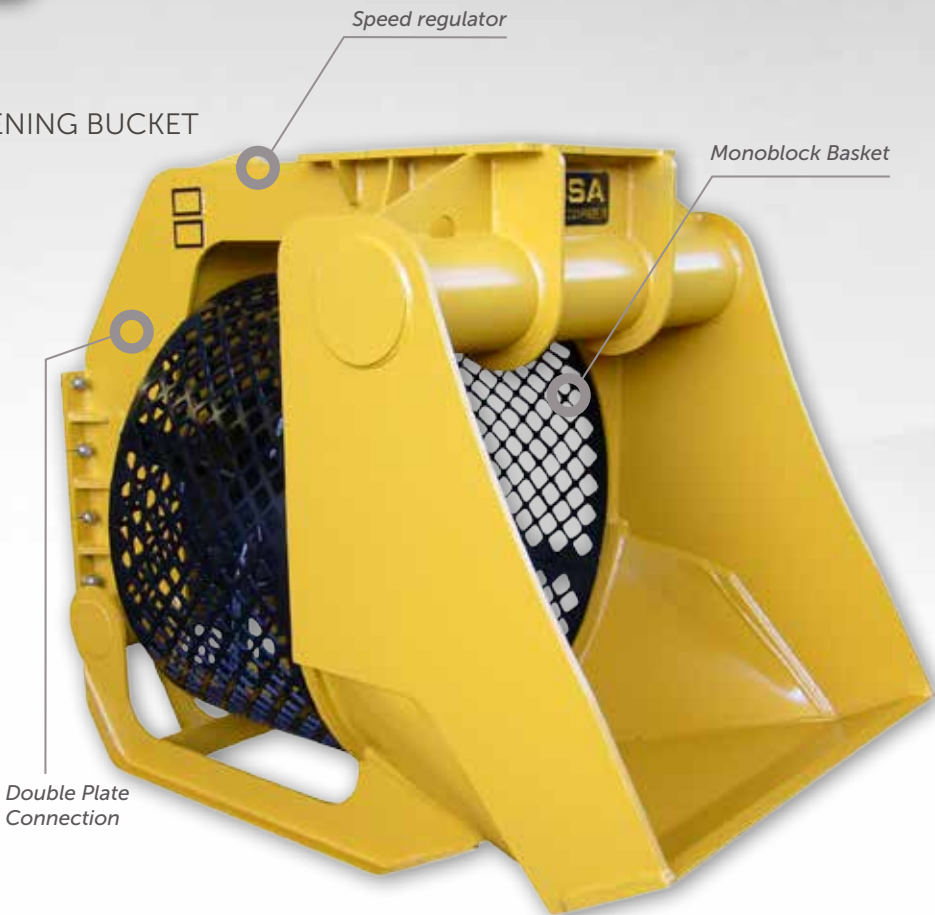
BV SERIESSCREENING BUCKET

Secondary Demolition Recycling

The screening bucket OSA BV has the main function of selecting the material during the excavation with the aim to limit the transports and reuse it directly on the job site. Obtaining not only a huge economic advantage but also a favourable environmental impact.

The screening bucket OSA is the ideal attachment to clear stony soils, select stones and gravel in the rivers, clean the beaches, divide the material during a demolition job or select and reuse the raised land to cover pipes and distribution ducting.

Its grids (available in different dimensions) are interchangeable and this permits to obtain material of different dimensions.



| MODEL BV         |         | BV 12        | BV 16        | BV 20        | BV 25        |
|------------------|---------|--------------|--------------|--------------|--------------|
| WIDTH            | mm      | 1150         | 1350         | 1650         | 1800         |
|                  | in.     | 45.2         | 53.1         | 65           | 70.8         |
| LENGTH           | mm      | 1900         | 2250         | 2400         | 2600         |
|                  | in.     | 74.8         | 88.6         | 94.5         | 102.3        |
| HEIGHT           | mm      | 1580         | 1645         | 2200         | 2350         |
|                  | in.     | 62.2         | 64.7         | 86.6         | 92.5         |
| BASKET DIAMETER  | mm      | 1100         | 1300         | 1550         | 1700         |
|                  | in.     | 43.3         | 51.2         | 61           | 66.9         |
| BASKET DEPTH     | mm      | 720          | 780          | 850          | 900          |
|                  | in.     | 28.3         | 30.7         | 33.5         | 35.4         |
| EXCAVATOR WEIGHT | ton     | 13/20        | 18/26        | 24/35        | 31/40        |
|                  | lbs     | 28660/ 44092 | 39683/ 57320 | 52910/ 77161 | 68343/ 88184 |
| WEIGHT           | kg      | 1200         | 1550         | 2100         | 2600         |
|                  | lbs     | 2645.5       | 3417.16      | 4629.7       | 5732.0       |
| OIL PRESSURE     | bar     | 200/220      | 200/220      | 200/220      | 200/220      |
|                  | psi     | 2900/ 3190   | 2900/ 3190   | 2900/ 3190   | 2900/ 3190   |
| OIL CAPACITY     | l/min   | 40/80        | 40/80        | 40/80        | 40/80        |
|                  | gal/min | 10/21        | 10/21        | 10/21        | 10/21        |
| ROTATION         | rpm     | 18/35        | 18/35        | 18/35        | 18/35        |







# DESIGNING DEMOLITION EXCELLENCE

We are constantly innovating to exceed our customer's worksite expectations. Our complete line of controlled demolition systems and hydraulic hammers is a showcase of engineering ingenuity and excellence.



[www.iai-usa.com](http://www.iai-usa.com) 1-877-219-1962