

2017 Third Generation Hydraulic Pile Breakers

Based on the original technology advantages, KP series pile breaker further extend the service life, increase working efficiency and add maintainability. Convenient structure design with easy maintenance will reduce risk cost.



Safe chain with CE certificate will be suitable for different construction requirements by adjusting its length to ensure the construction safety.



Casting steel with longer service life isn't easy to deformation or cracking, which can extend the pile breaker's service life and increase its using valve.



Improved design of drill rod with higher reliability can extend its service life. Convenient structure design with easy maintenance will reduce risk cost.



Unique design of lifting frame can adjust the lifting point to meet the requirements of different pile diameter constructions, which can make construction more smooth and higher efficient.



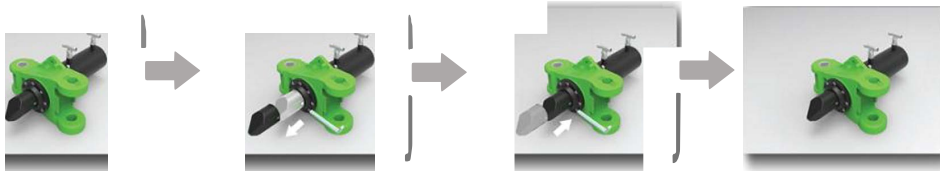
Cylinder parts use special material with longer service life. Imported seal can ensure the quality.



Integral forging heat treatment of guide flange use wearproof material with reliable quality.



Perfect adapters and other spare parts can be suitable for all types excavators.



KP315 III /KP380 III Hydraulic Pile Breaker

PERFORMANCE

- The leading hydraulic pile breaker/cutter, with five patented technologies, is the most efficient equipment to crushing the foundation piles and fills the domestic gap;
- Using advanced modular design, it can be used for crushing piles of different diameters by changing the module combination quantity;
- It can be installed on a large variety of construction machinery, realizing the versatility and economy.
 - Simply operated with less staff, reducing the construction cost;
 - Applying new material and new technology makes it much more reliable and reduces maintenance cost;
 - Crushing the piles wholly, reducing the consumption of energy;
 - The design of simple changing modular and general technology can realize quick maintenance and extend the service life;
 - Using adjustable chain, the pile breaker/cutter can be applied to constructions in different terrains;
 - The design of long service life can bring customers optimal benefits;
 - Full hydraulic drive, low noise operation;
 - Quick assembled, more convenient to transport and more efficiently;



KP315 III construction					
Module quantity	Diameter range (mm)	Excavator capacity (t)	Weight (kg)	Height of single cutting pile (mm)	System recommended flow (L/min)
6	300~350	≥12	1000	≤300	150
7	350~450	≥12	1100	≤300	160
8	450~550	≥16	1200	≤300	180
9	550~650	≥16	1300	≤300	190
10	650~760	≥20	1400	≤300	200
11	760~860	≥20	1500	≤300	220
12	860~960	≥20	1600	≤300	230
13	960~1050	≥20	1700	≤300	250



KP380 III construction					
Module quantity	Diameter range (mm)	Excavator capacity (t)	Weight (kg)	Height of single cutting pile (mm)	System recommended flow (L/min)
8	600	≥20	2200	≤300	200
9	700	≥20	2430	≤300	230
10	800~900	≥25	2660	≤300	260
11	1000	≥25	2890	≤300	290
12	1100	≥25	3120	≤300	320
13	1200	≥28	3350	≤300	350
14	1300~1400	≥28	3580	≤300	380
15	1500	≥30	3810	≤300	410
16	1600	≥30	4040	≤300	440
17	1700	≥35	4270	≤300	470
18	1800	≥35	4500	≤300	500

Technical specification

- Pile diameter
- Max.rod pressure
- Max.cylinder stroke
- Max.crowd pressure
- Max.single cylinder flow
- Quantity/8h
- Max.single cutting height
- Excavator capacity
- Single module weight
- Single module size
- Operating size
- Overall weight

	13 modules combination	18 modules combination
Pile diameter	350~1050mm	600~1800mm
Max.rod pressure	280kN	600kN
Max.cylinder stroke	135 mm	150 mm
Max.crowd pressure	34.3MPa	34.3MPa
Max.single cylinder flow	20L/min	30L/min
Quantity/8h	60/8h	48/8h
Max.single cutting height	≤300mm	≤300mm
Excavator capacity	≥20t	≥35t
Single module weight	100kg	230kg
Single module size	645×444×316mm	696×566×350mm
Operating size	Φ2098×4000mm	Φ3316×4840 mm
Overall weight	1.7t	4.5t

KP400S/KP450S/KP500S Hydraulic Pile Breaker

PERFORMANCE

KP400S/KP450S

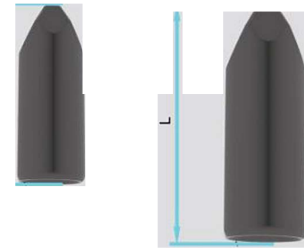


KP500S



Type	KP400S	KP450S	KP500S
Pile length	250~400 mm	350~450 mm	400~500 mm
Max.rod pressure	280 kN	280 kN	280 kN
Max.cylinder stroke	135 mm	135 mm	135 mm
Max.crowd pressure	34.3 MPa	34.3 MPa	34.3 MPa
Max.single cylinder flow	20 L/min	20 L/min	20 L/min
Quantity/8h	160/8h	180/8h	200/8h
Max.single cutting height	≤300 mm	≤300 mm	≤300 mm
Excavator capacity	≥7 t	≥8 t	≥10 t
Operating size	1440×1440×1500 mm	1490×1490×1500 mm	1588×1588×1500 mm
Overall weight	0.6 t	0.65 t	0.92 t

	Length of L Long Drill Rod	
KP315 III	200 mm	250 mm
KP380 III	260 mm	310 mm
KP400S	200 mm	250 mm
KP450S	200 mm	250 mm
KP500S	200 mm	250 mm



Pile 1

Pile 2

Model	Min. Pile Distance A	Max. Unilateral Size of Machine B
KP315 III	520 mm	655 mm
KP380 III	680 mm	830 mm
KP400S	520 mm	655 mm
KP450S	520 mm	655 mm
KP500S	520 mm	655 mm